

**GETTING YOUR  
TERMINOLOGY  
STRAIGHT**

# How do I refer to my **project?**

Te Tōpūtanga o te Whare Korou ki Aotearoa, Passive House Institute NZ (PHINZ) has created this guide to help with terminology when talking about the Passive House Standard. We also encourage Passive House professionals to read “claiming the Passive House standard” guide, downloadable from [passivehouse.nz](http://passivehouse.nz)

While PHINZ does not endorse or encourage approaches that do not meet the Passive House Standard, we know that not all projects are Certified Passive Houses and that conversations regarding better performing buildings often seek to make comparisons.

This guide includes additional terms, common in the construction industry, to guide these conversations. The terms themselves and how they are used are not governed by PHINZ. We have included them in this guide to provide context, and to help members, sponsors, clients and journalists on Aotearoa’s journey towards the Passive House Standard.

# How do I refer to my project?

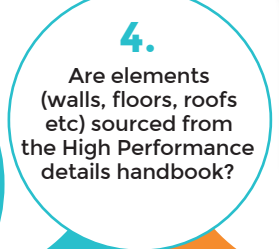
A PHI Low Energy Building *can't be referred to as a Passive House*. The Low Energy Building standard is not intended as a target - it's for projects that narrowly miss out on Passive House and EnerPHit certification.



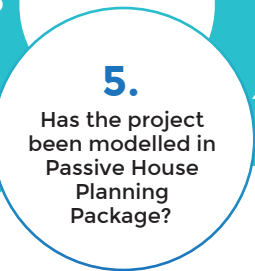
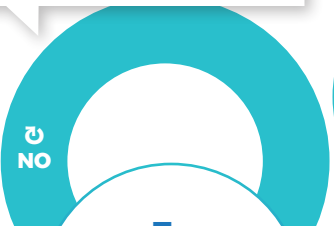
Make sure to use the correct category and class (Classic, Plus or Premium)



The High Performance Details Handbook is not meant to be used in isolation as a source of construction options. To avoid unintended outcomes in your project, you need a thorough understanding of building performance, alongside energy modelling and robust software tools.



The Passive House Standard is a reliable way of achieving comfortable, healthy, energy-efficient projects. If a project doesn't gain PHI certification, there is a high risk that it won't perform as intended.




The lowest standard you can legally build



Just above the lowest standard you can legally build



 When communicating about these three categories of project, do not make any reference to Passive House Institute (PHI) standards directly or indirectly (eg describing a project as using "Passive House principles"), as it is misleading and could be subject to legal action by the owner or client as has happened internationally. See "claiming the Passive House standard" guide, downloadable from [passivehouse.nz](http://passivehouse.nz) for more details.