

The background of the image features a complex geometric design. It consists of several overlapping, angular shapes in shades of white, light gray, and beige, creating a sense of depth and architectural structure. At the bottom, there are two large, light-colored wooden panels with a visible grain, which appear to be part of a larger architectural assembly.

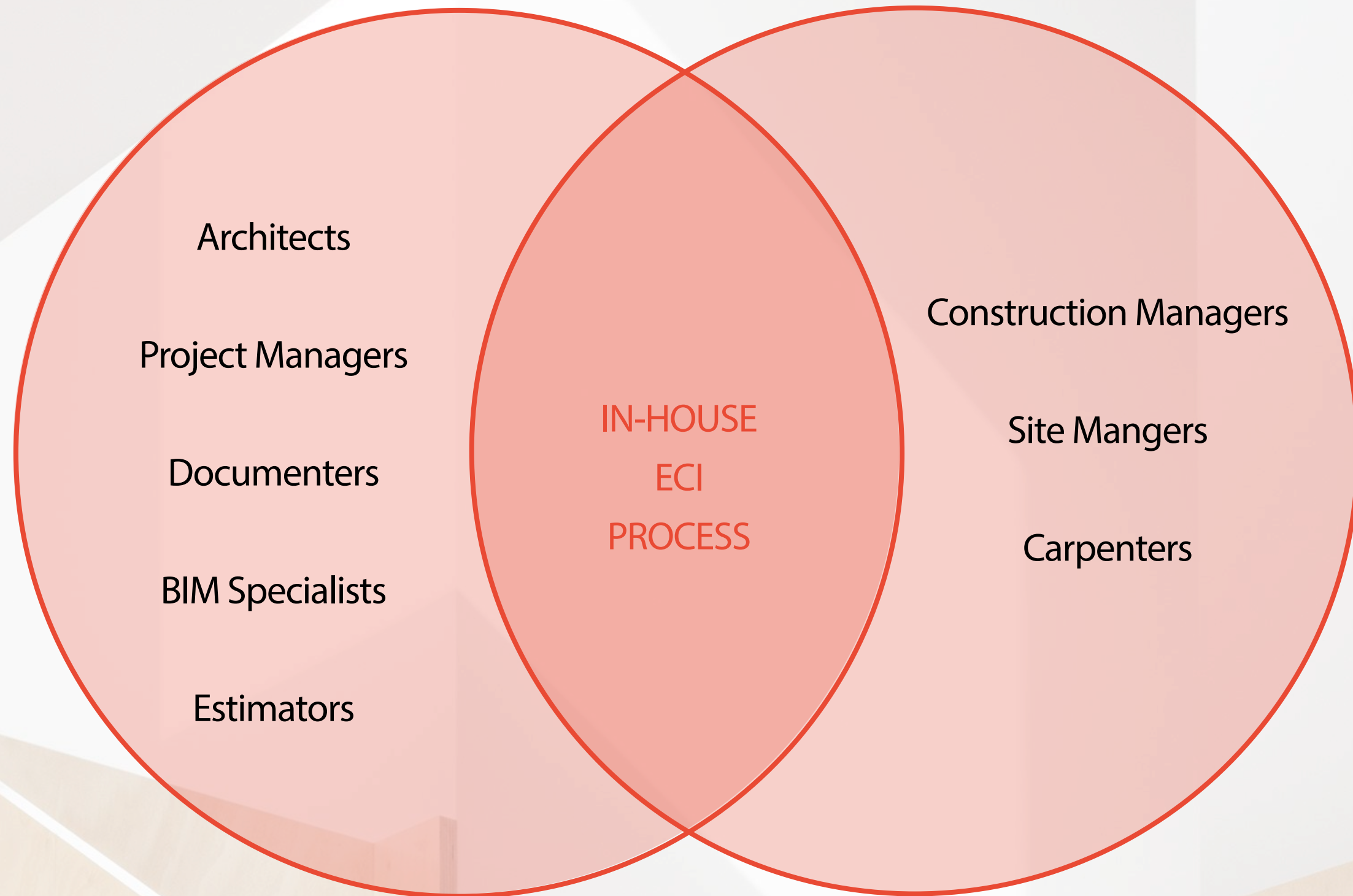
ARKit

Advanced Prefabricated Architecture

WHO WE ARE

DESIGN TEAM

CONSTRUCTION TEAM



INTERDISCIPLINARY TEAM



STUDIO & FABRICATION FACILITY

ARKit
Advanced Prefabricated Architecture

WHAT WE DO



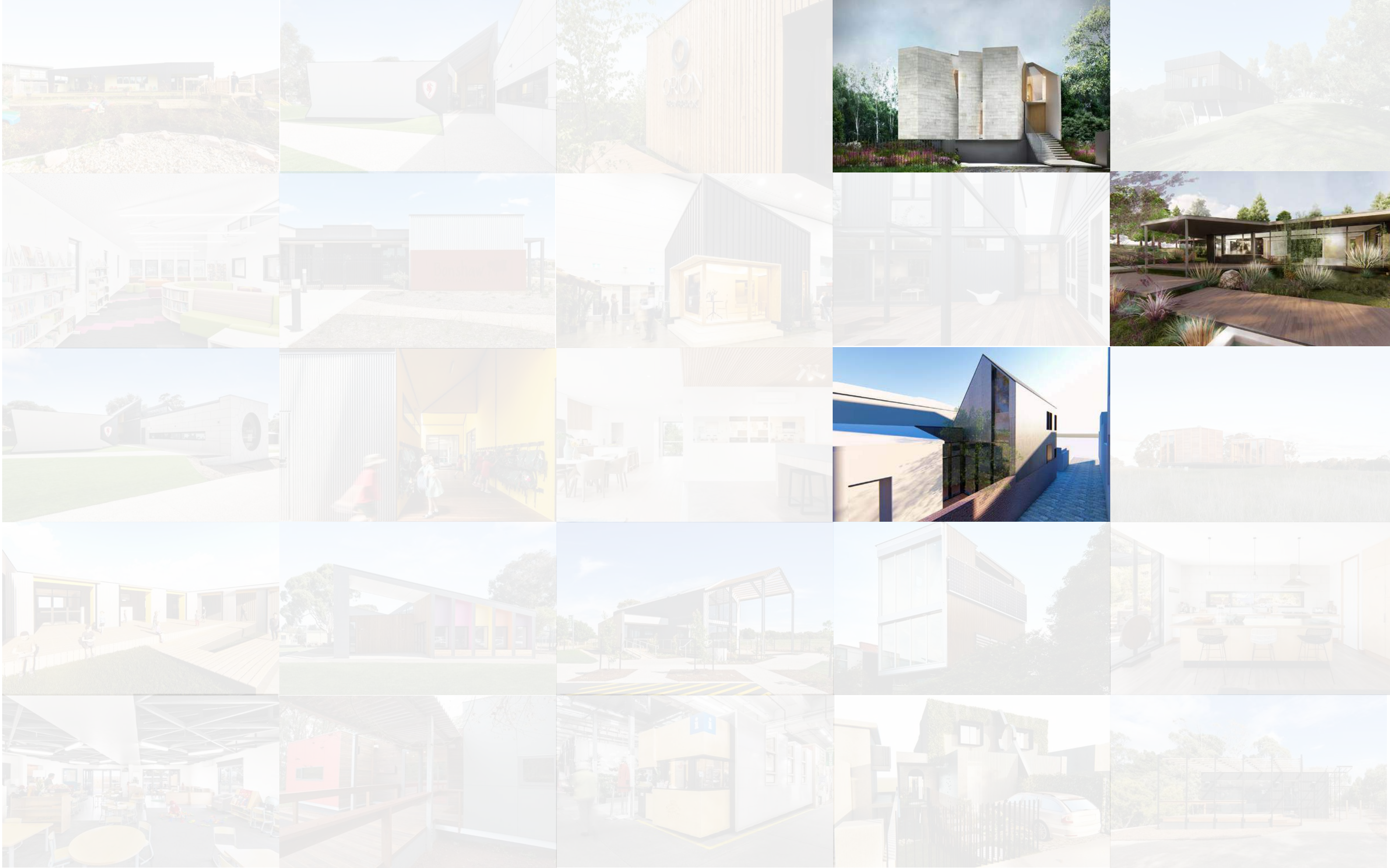
PROJECTS



Panelised | Modular | Hybrid

PRE-FAB SYSTEMS

ARKit
Advanced Prefabricated Architecture



PASSIVE HOUSE



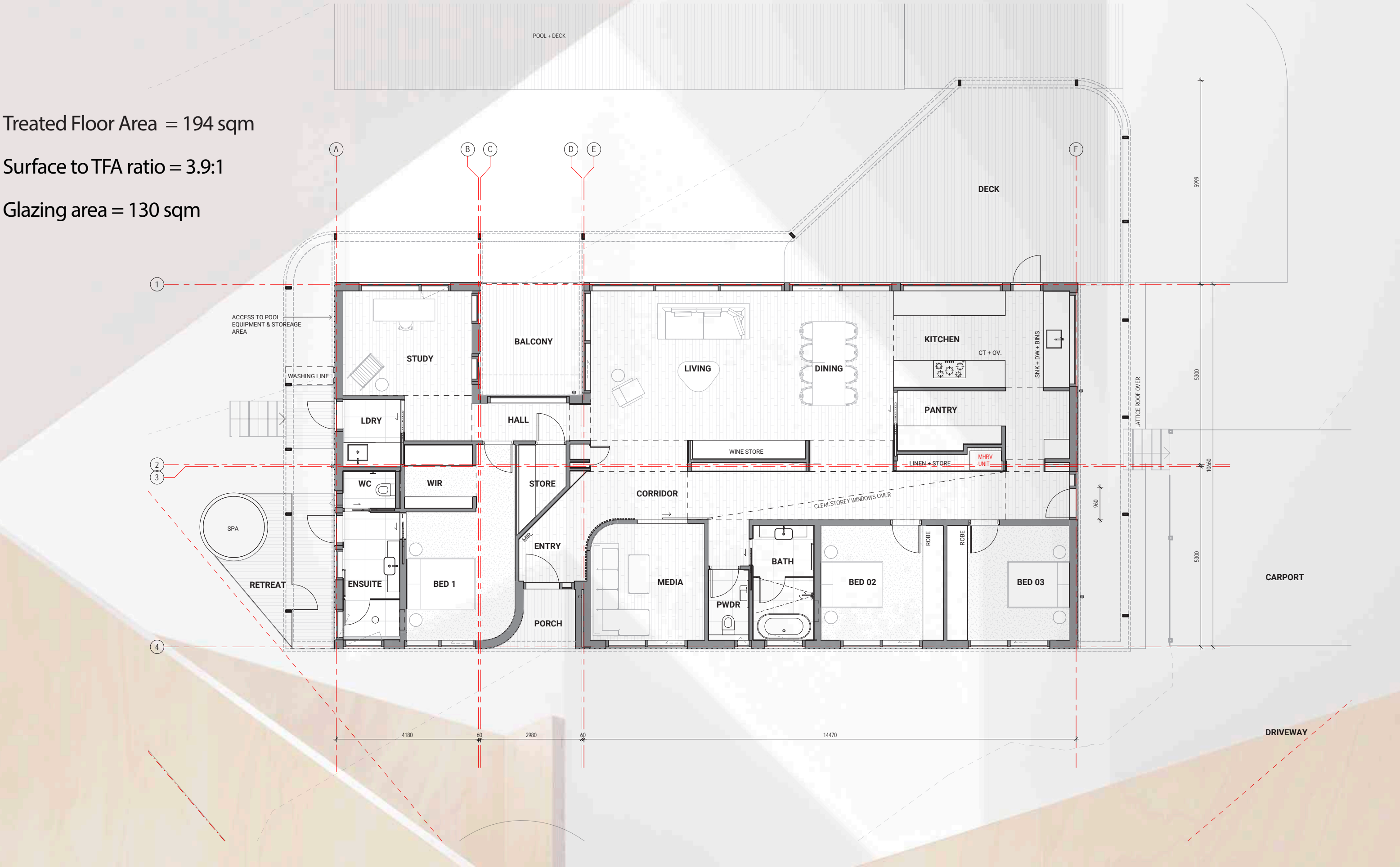
DONVALE PASSIVE HOUSE

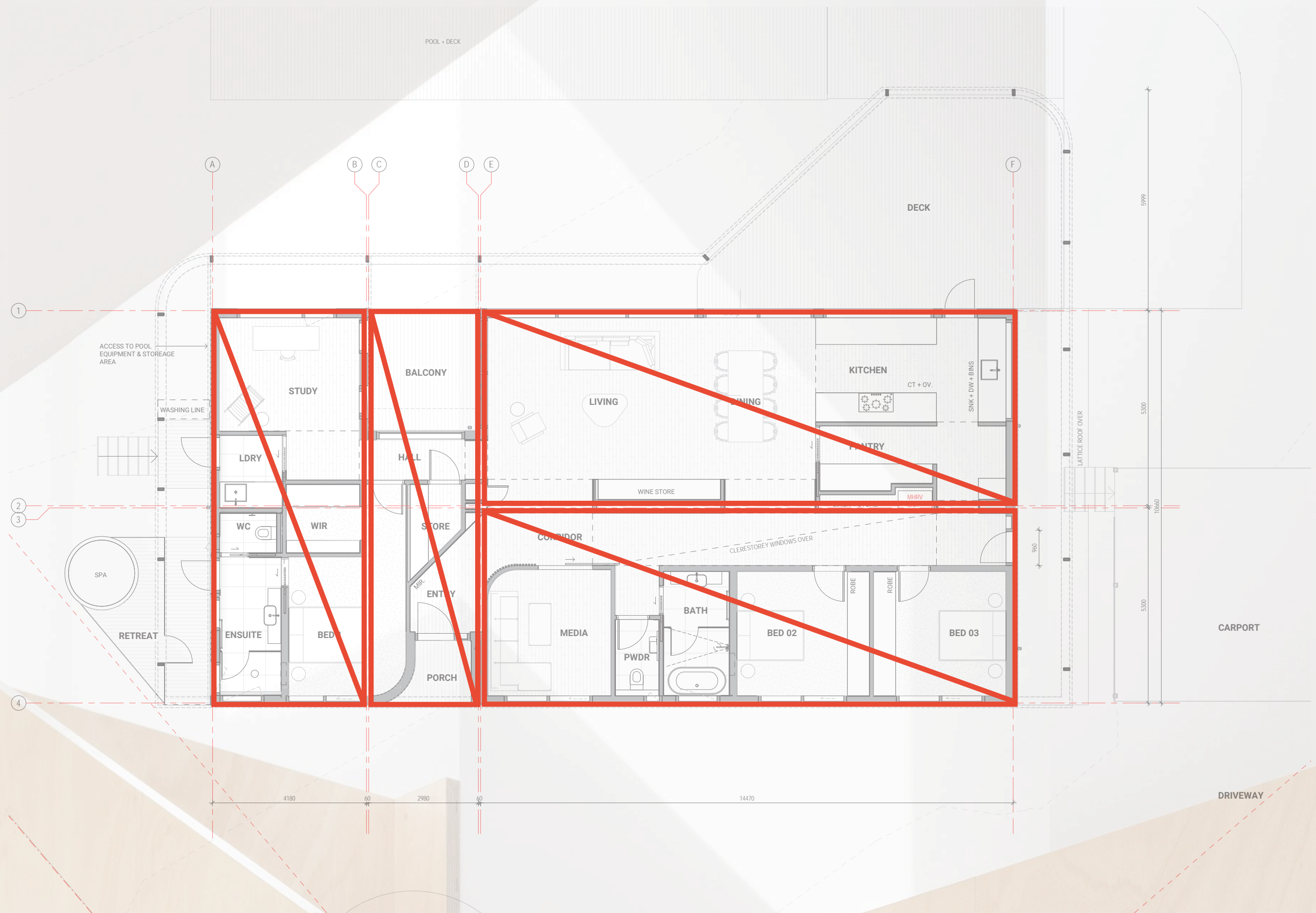


Treated Floor Area = 194 sqm

Surface to TFA ratio = 3.9:1

Glazing area = 130 sqm

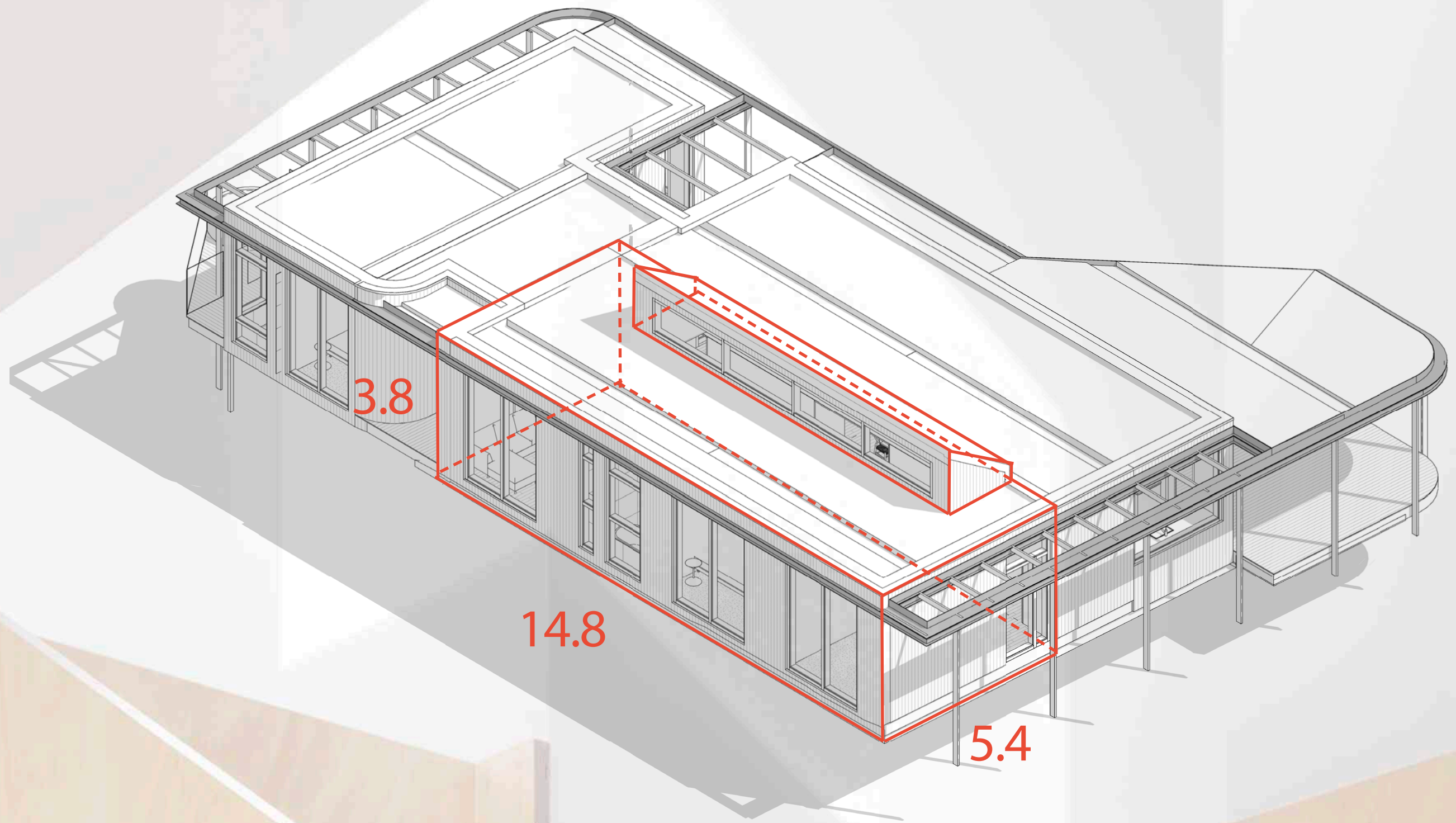




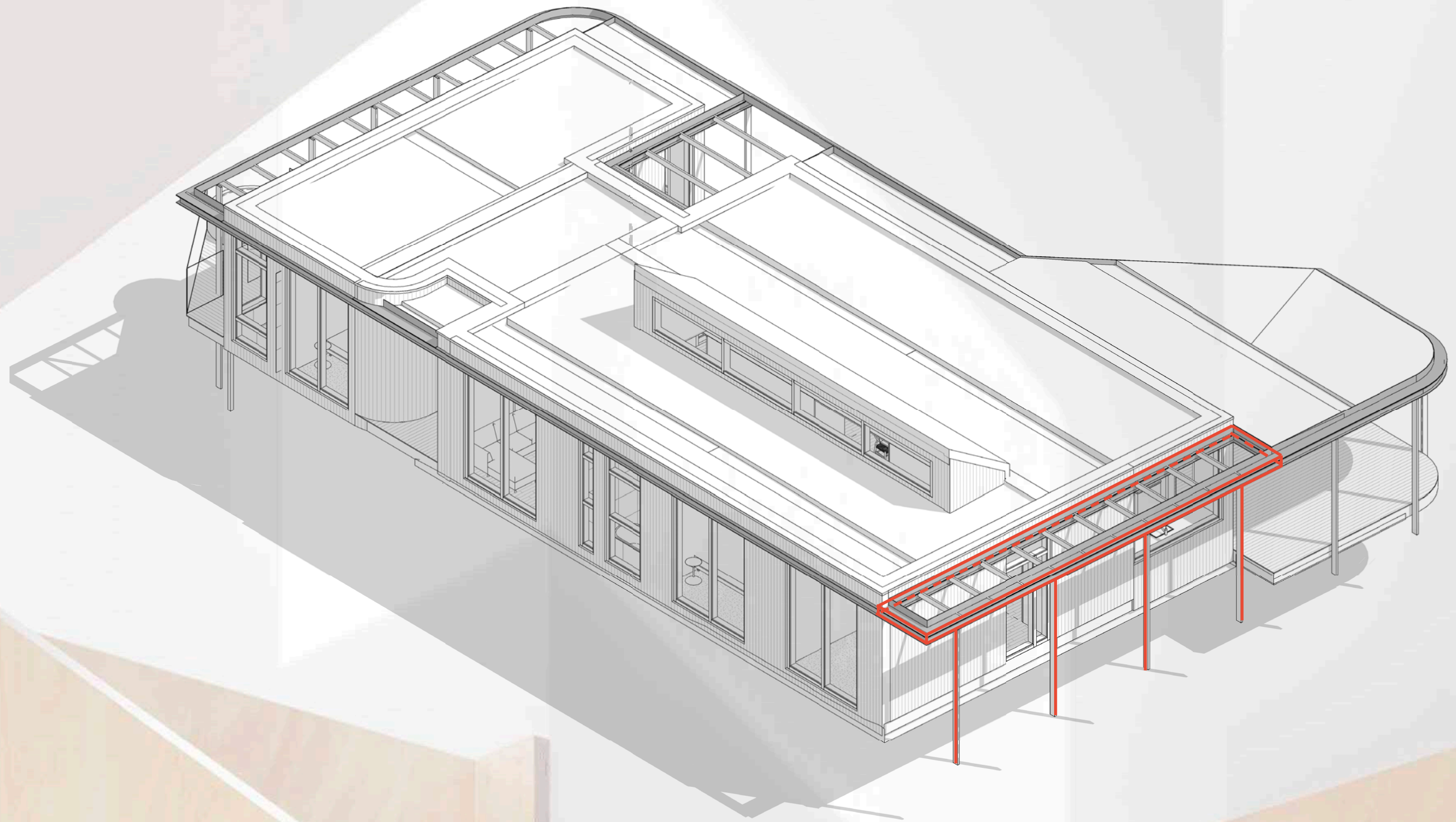
DESIGN CONSIDERATIONS



DESIGN CONSIDERATIONS



DESIGN CONSIDERATIONS

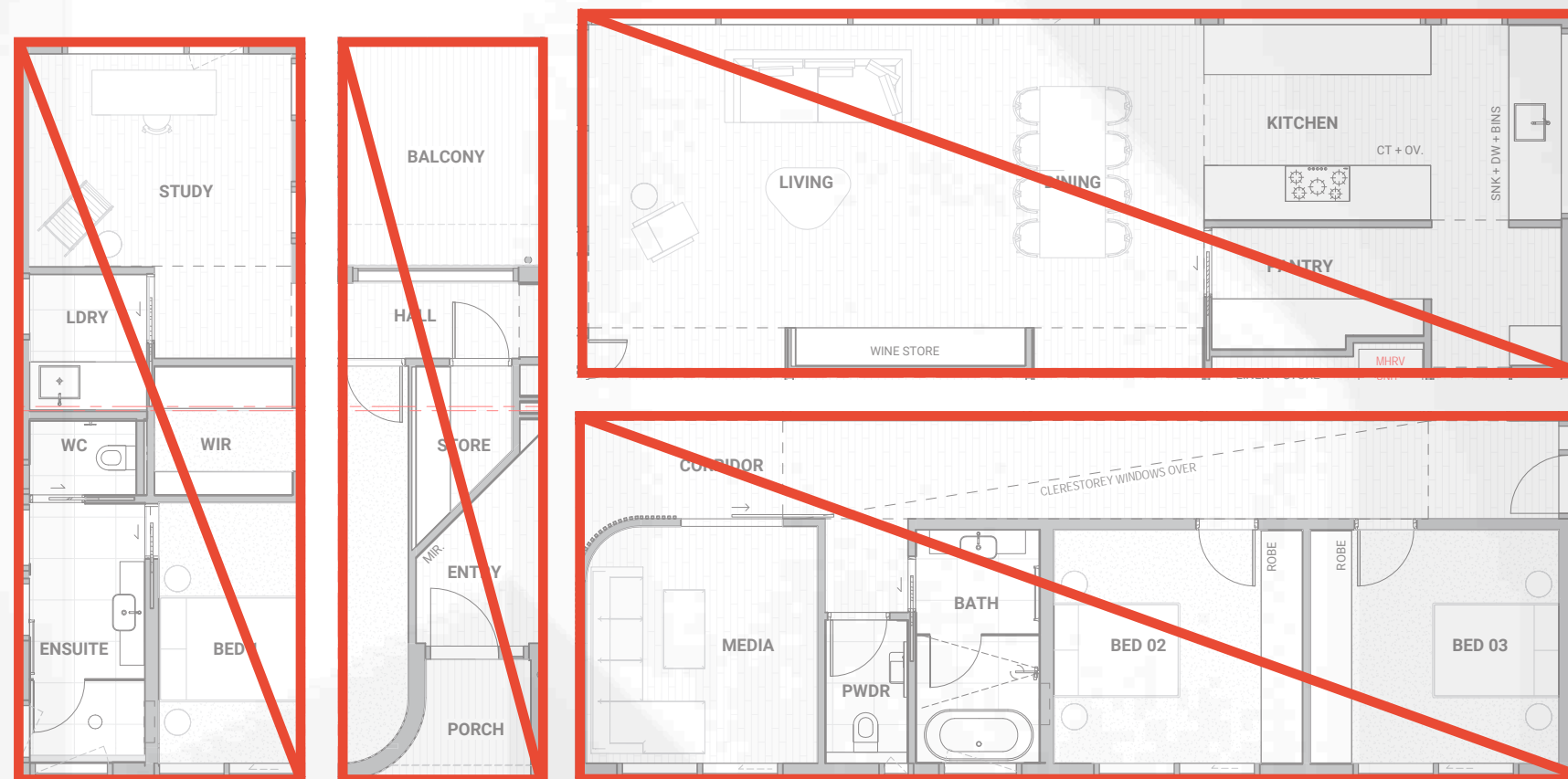


DESIGN CONSIDERATIONS

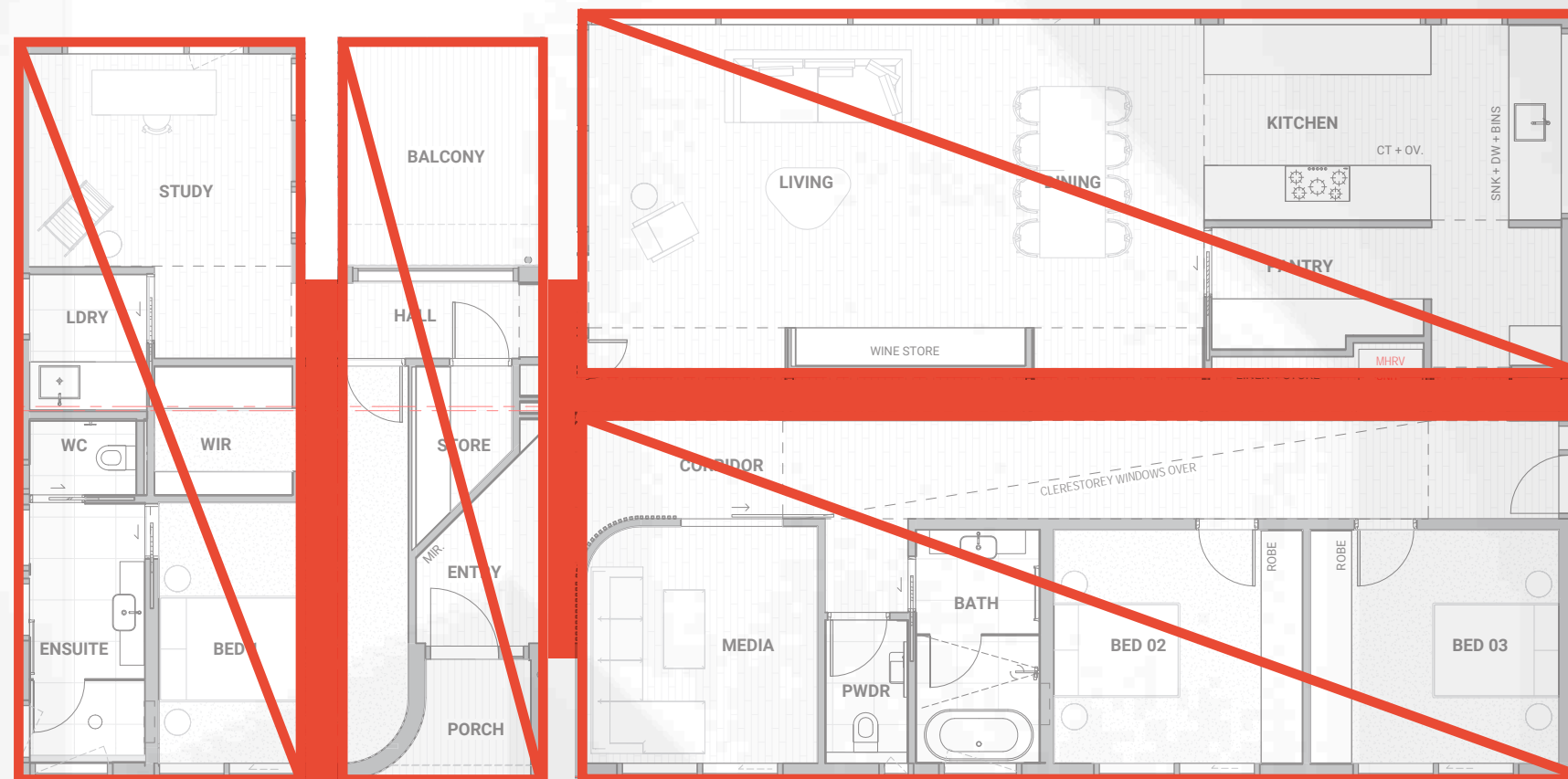
ARKit
Advanced Prefabricated Architecture



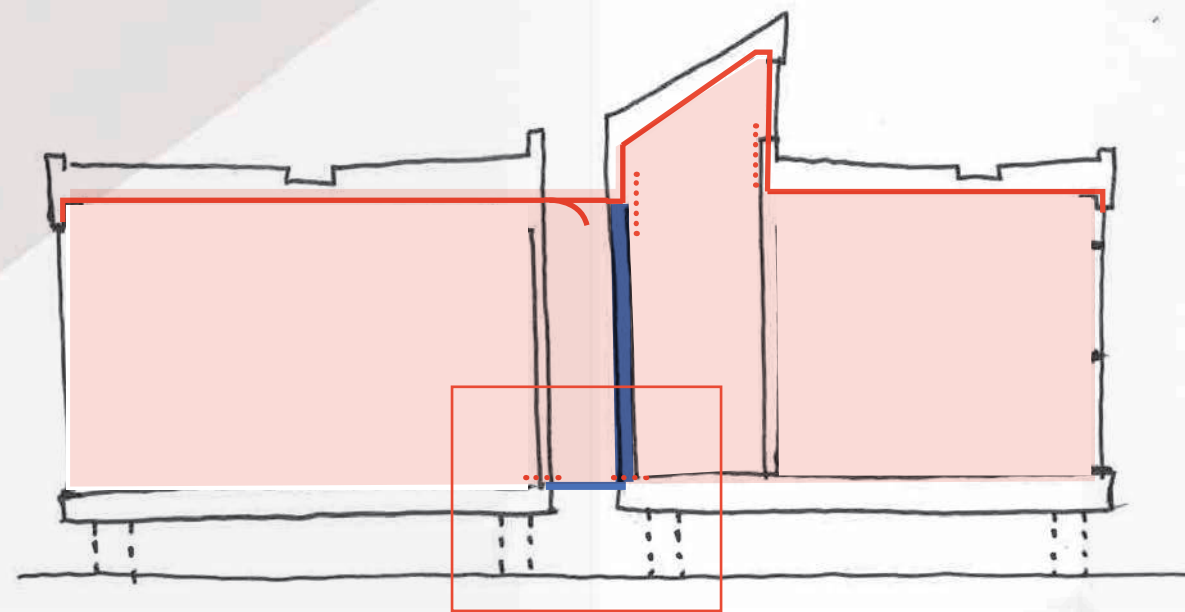
DESIGN CONSIDERATIONS



FABRICATION CONSIDERATIONS

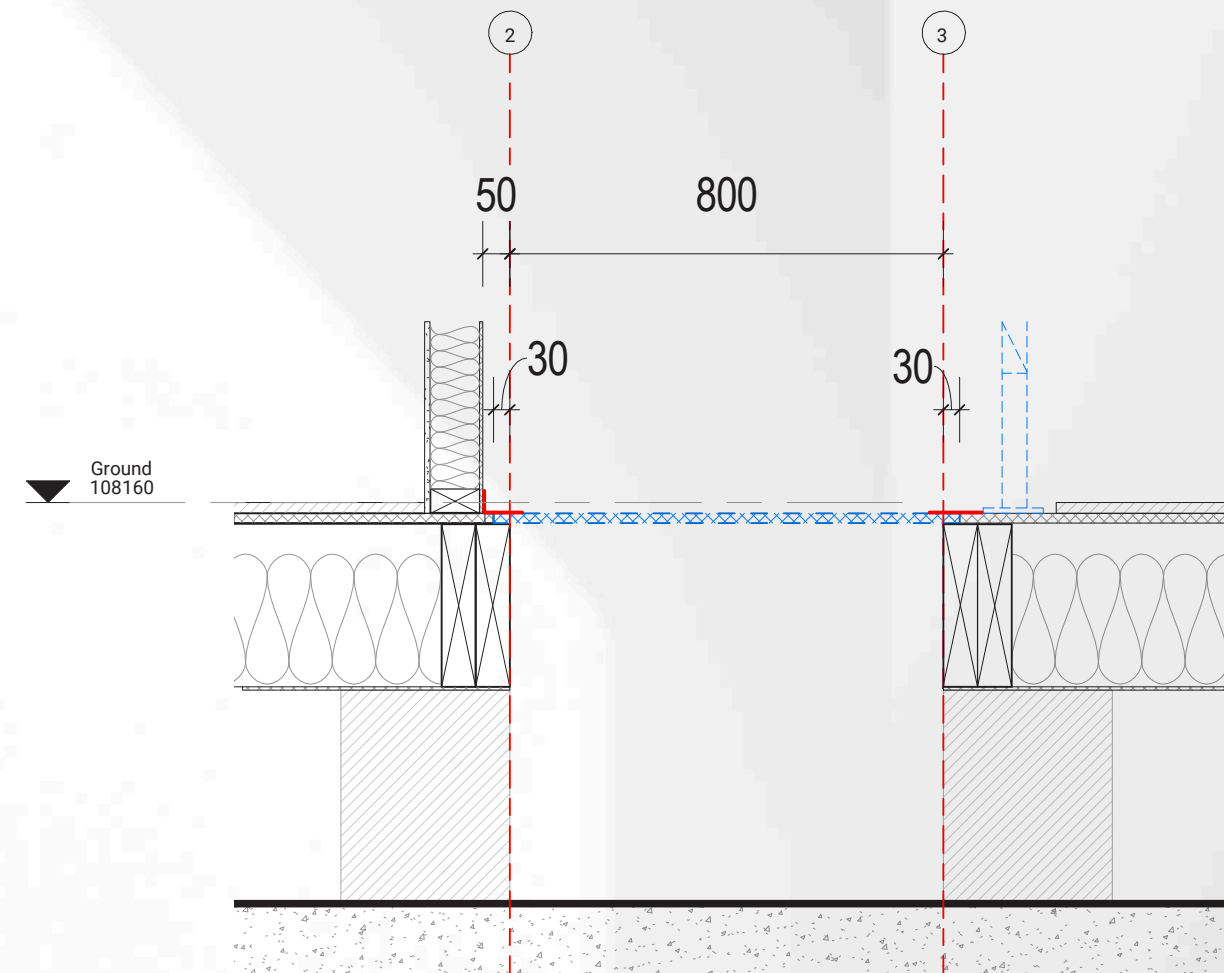


FABRICATION CONSIDERATIONS

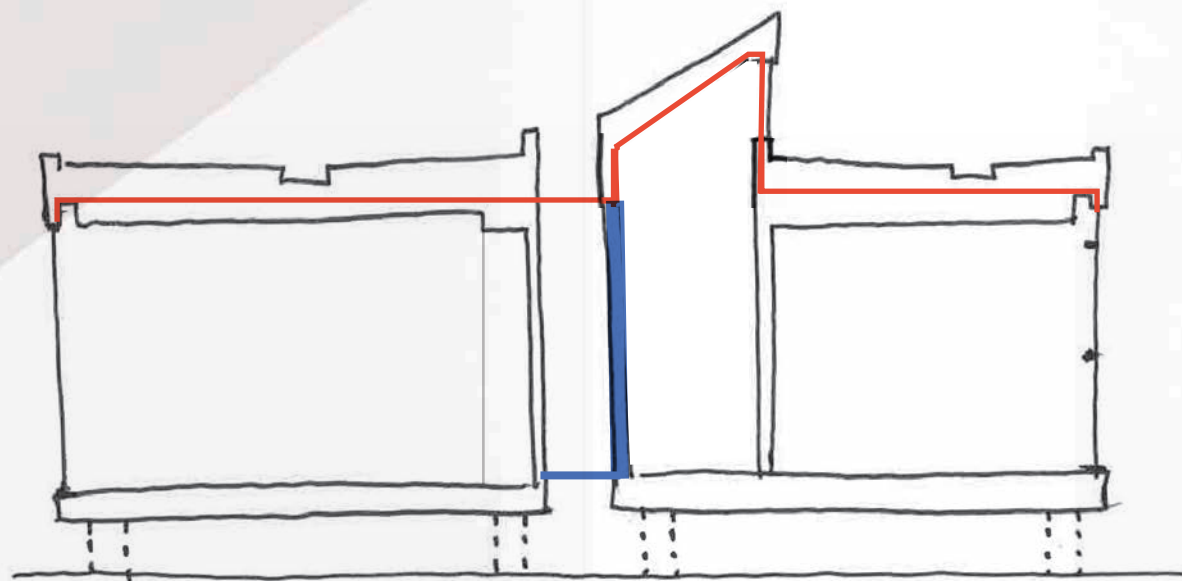


Off-site : Lock-up

- Treated Volume
- Taping
- Applied Air Barrier
- Temporary Structure

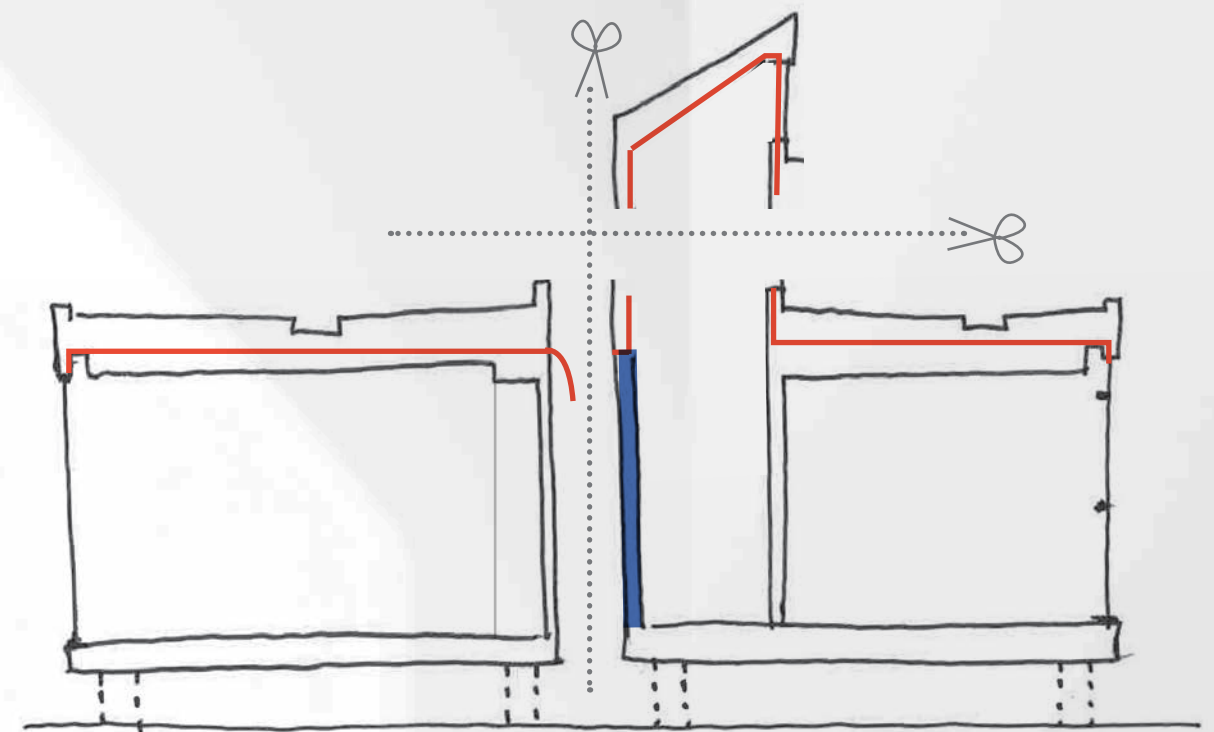


- Post window install
- Pre finishes & joinery install
- Air barrier to ceiling & walls + excess overlap at joins
- Temporary structure to allow continuity of air barrier
- Temporary connection of all modules



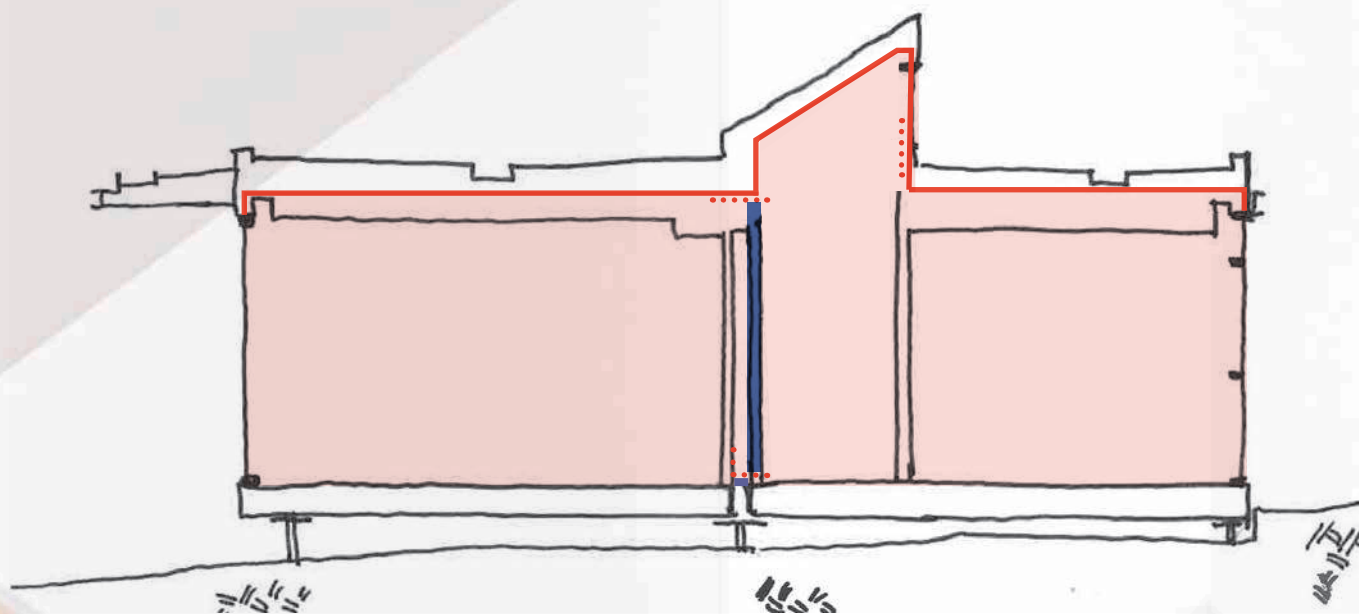
Offsite : Fit-out

- Post blower-door test #1
- Install of all finishes & joinery at uninterrupted points of envelope (excluding at junctions)
- Temporary structure remains for transport where req.



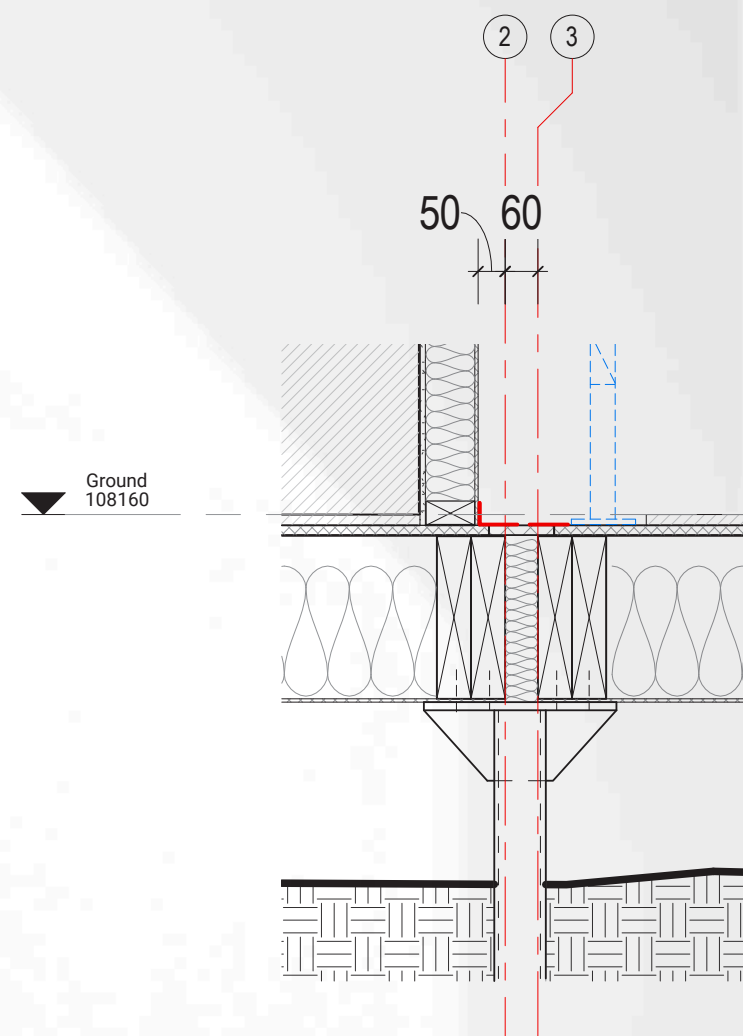
Dis-assembly & Transport

- Cut of all temporary seals to envelope
- Disassemble modules at junctions
- Lift onto trucks & transport to site

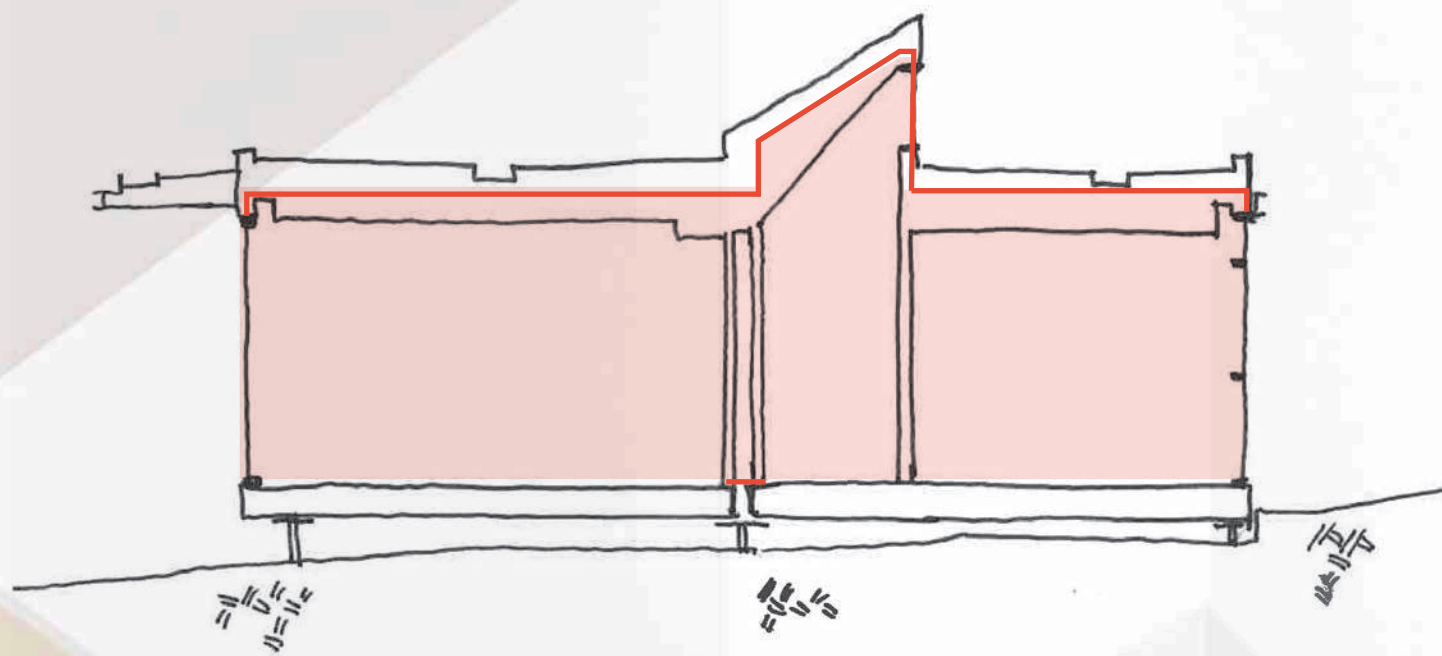


Onsite : Installation & Connection

- Treated Volume
- Taping
- Applied Air Barrier
- Temporary Structure

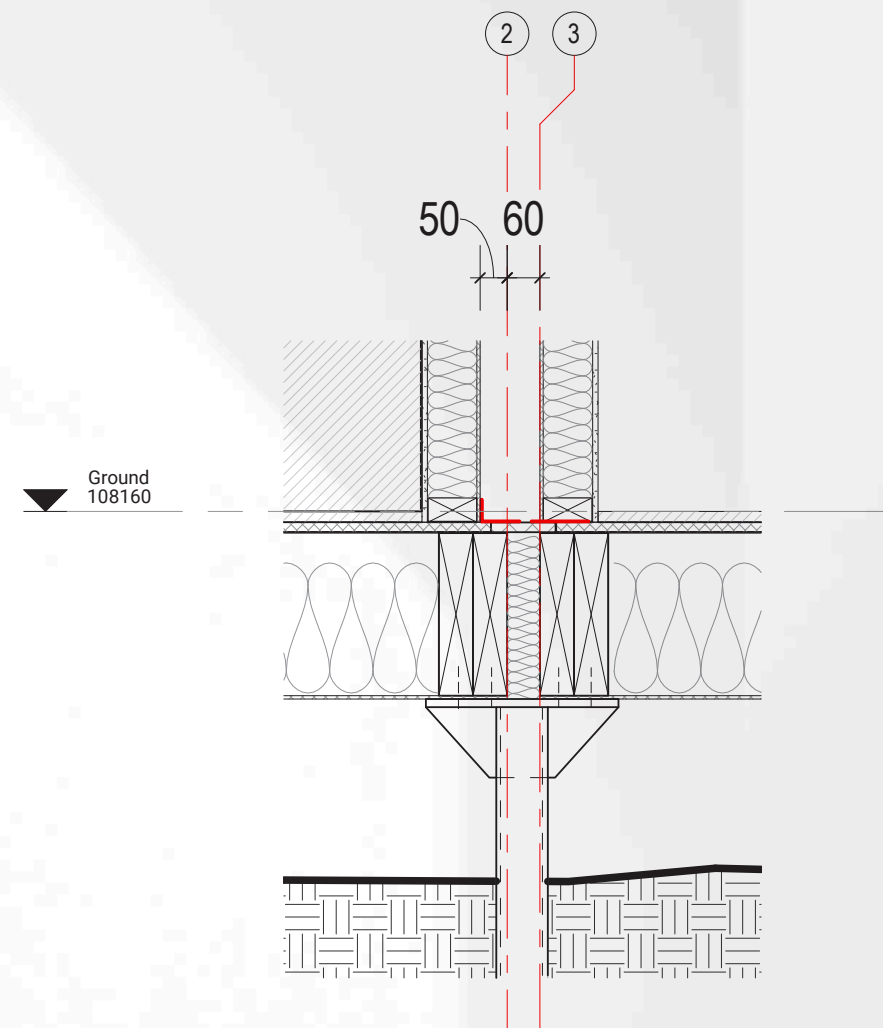


- Crane and positioning on footings
- Install of additional insulation in cavity modules
- Connection of modules tiling excess air barrier, infill panels in floor and tape to all junctions
- Blower-door test #2 prior to install of finishes to junctions



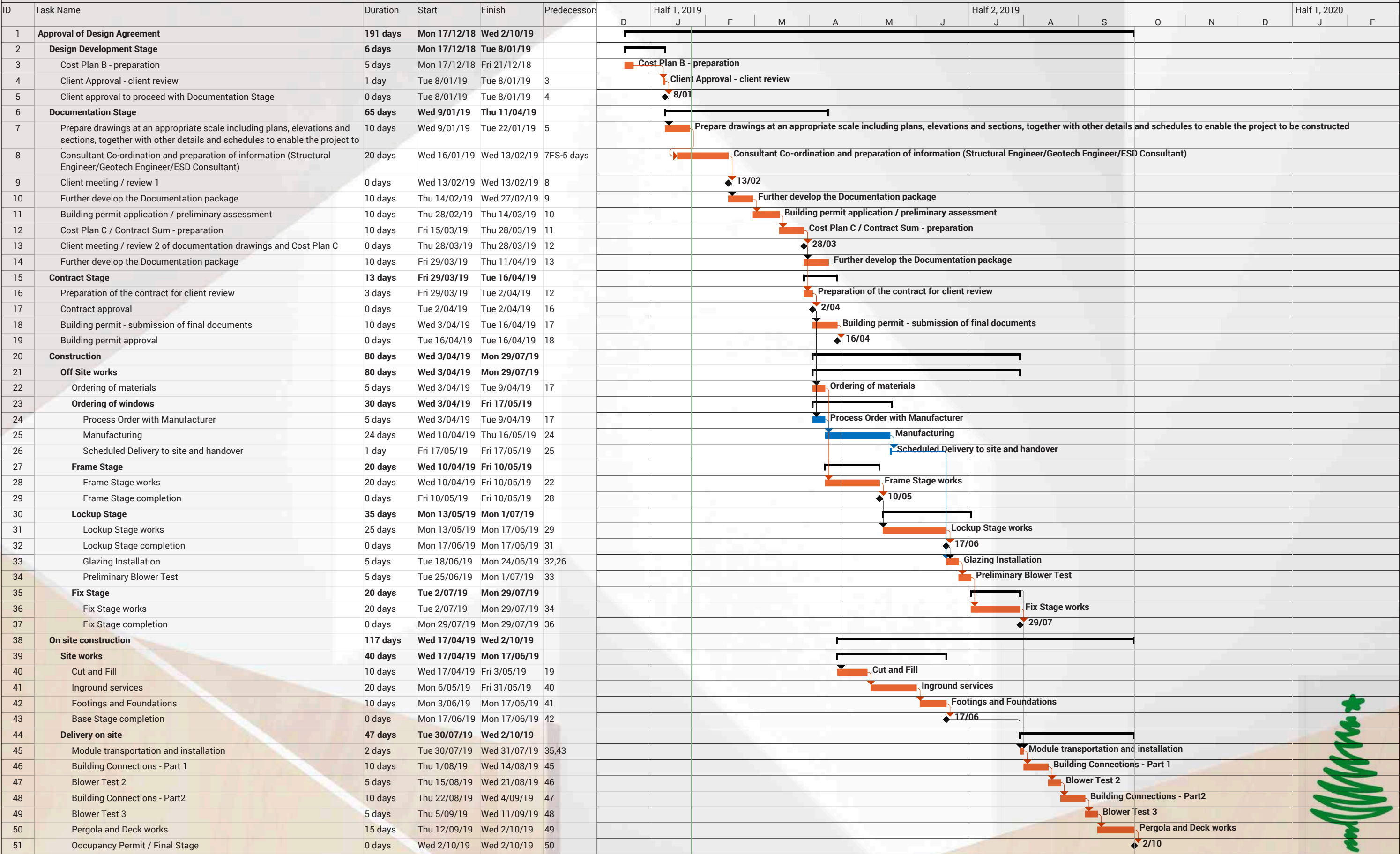
Onsite : Final Fitout

- Treated Volume
- Taping
- Applied Air Barrier
- Temporary Structure

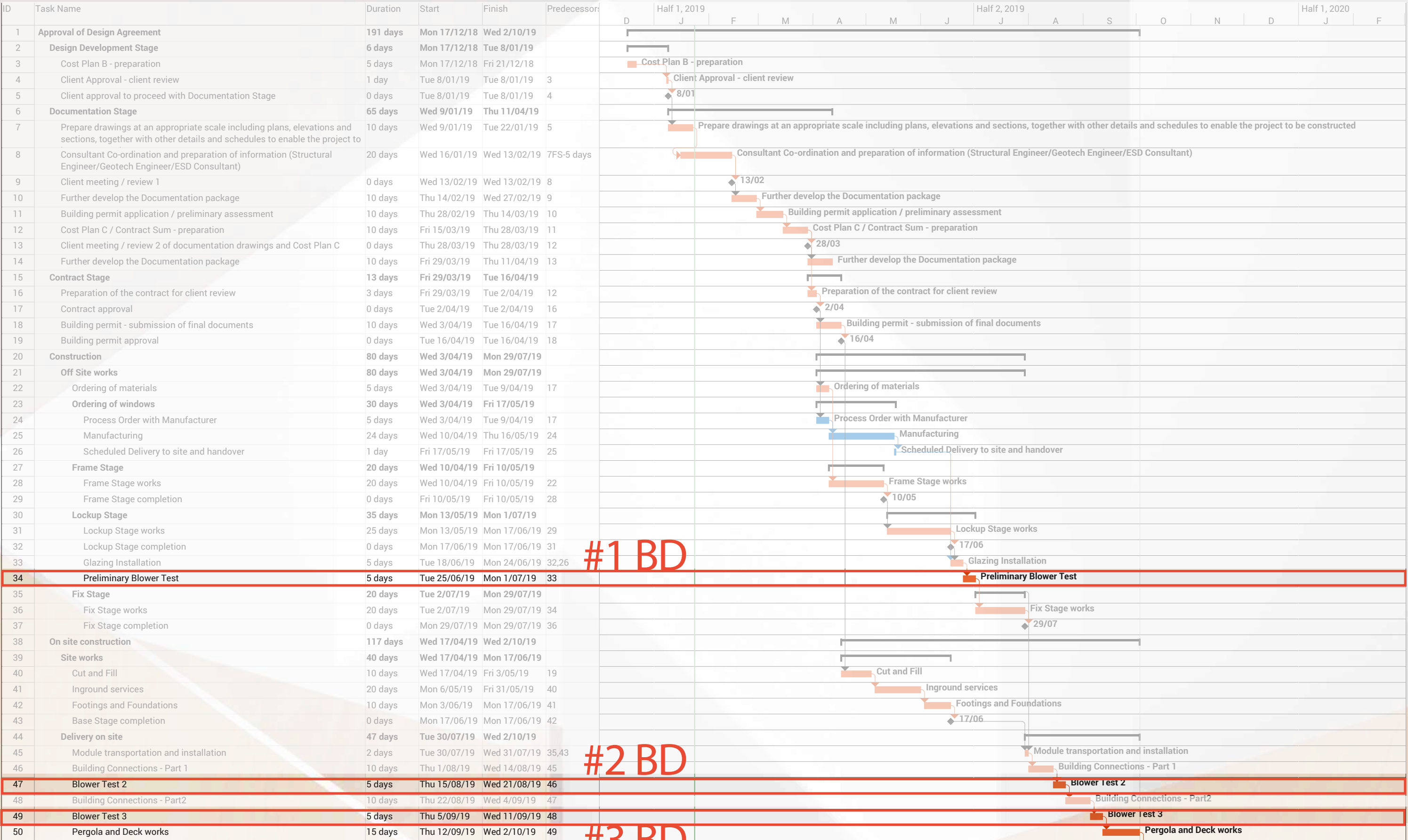


- Install of final structure and wall panels at junctions
- Install of all finishes and joinery at junctions
- Blower-blower door test #3 - FINAL

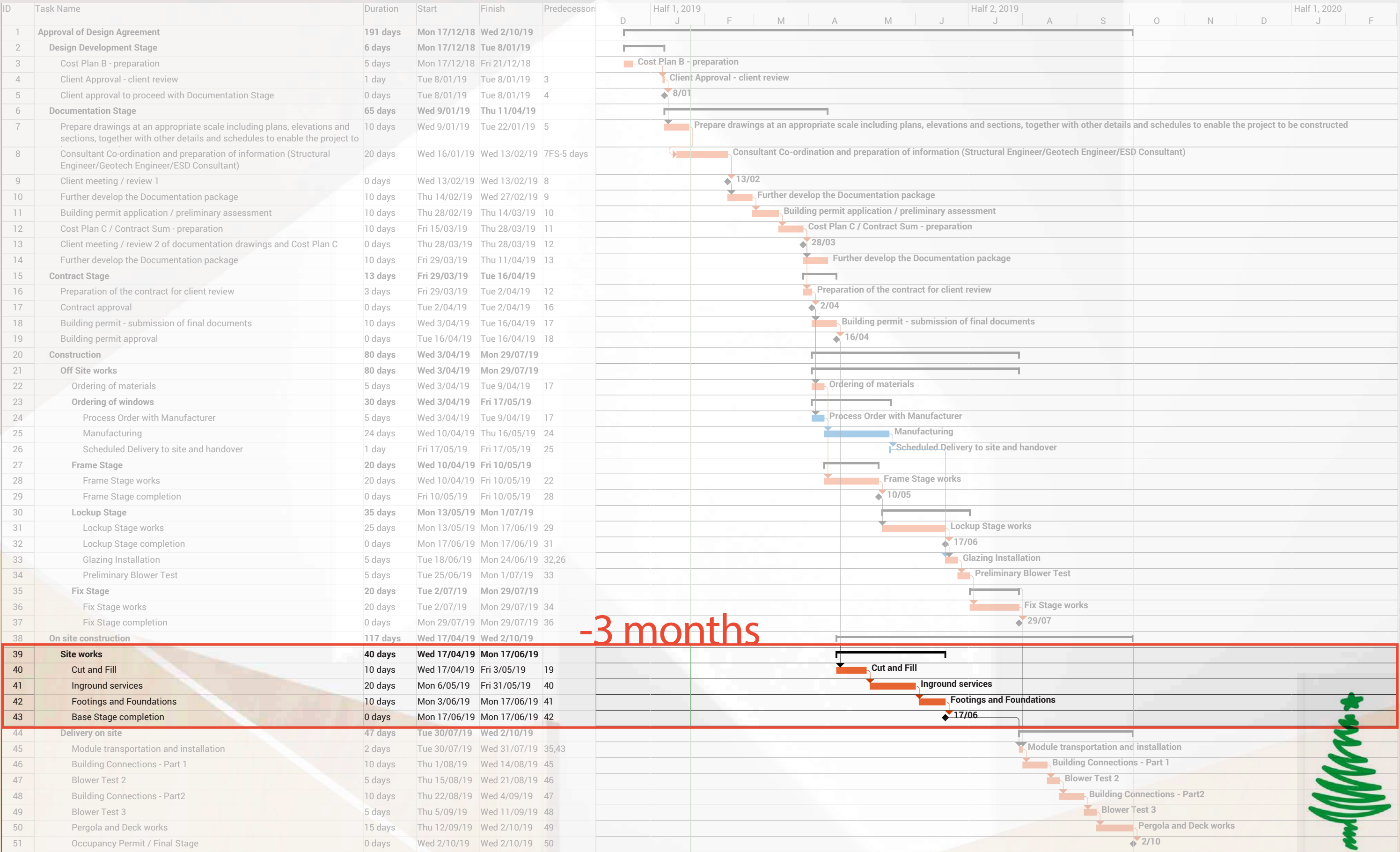
Draft #0000



PROGRAM CONSIDERATIONS



PROGRAM CONSIDERATIONS



PROGRAM CONSIDERATIONS



INTERIOR CONSIDERATIONS

ARKit
Advanced Prefabricated Architecture



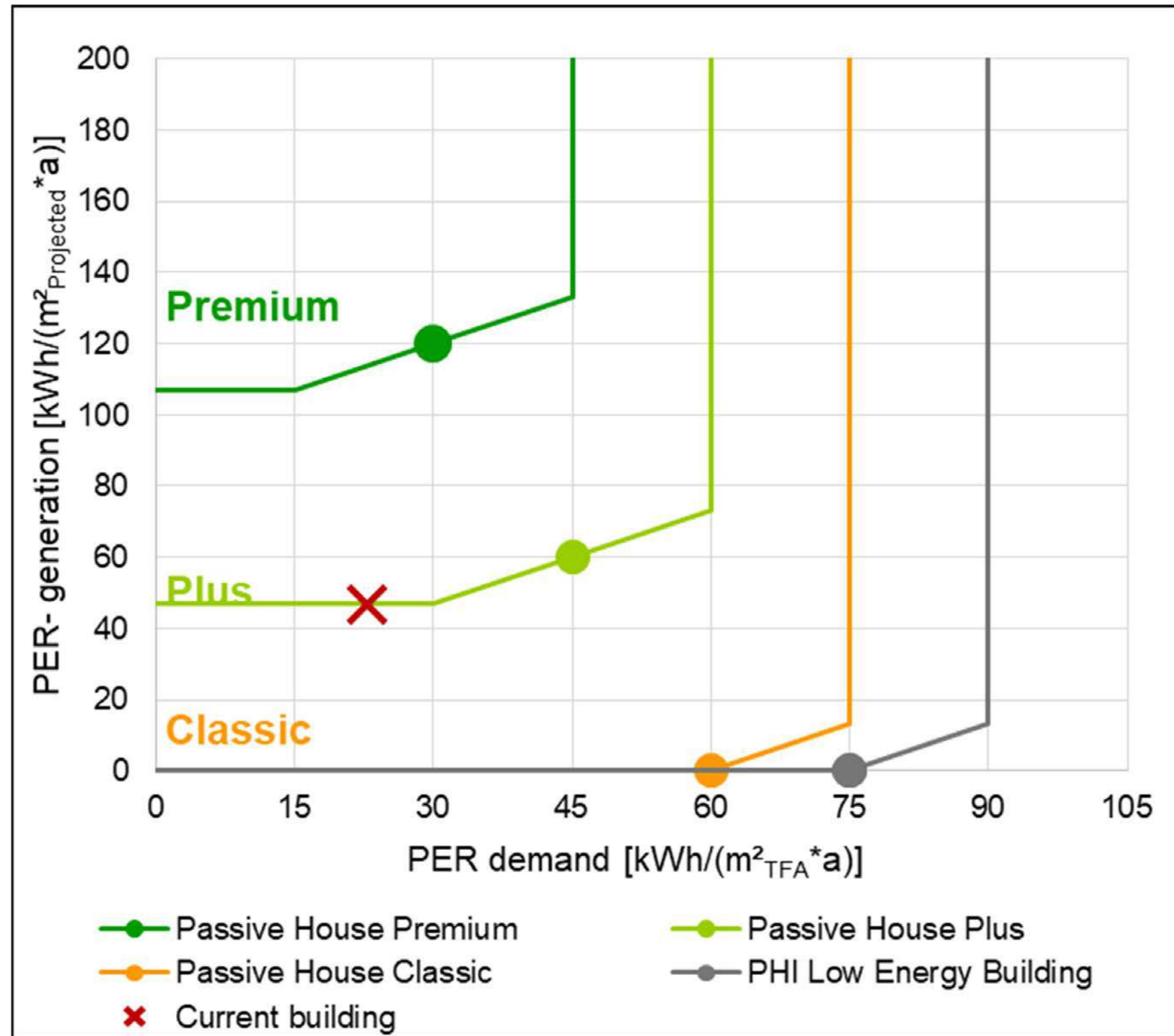
INTERIOR CONSIDERATIONS



DONVALE PASSIVE HOUSE



DONVALE PASSIVE HOUSE



DONVALE PASSIVE HOUSE



LEARNING FROM LIMESTONE

 John Wardle
Architects

ARKit
Advanced Prefabricated Architecture

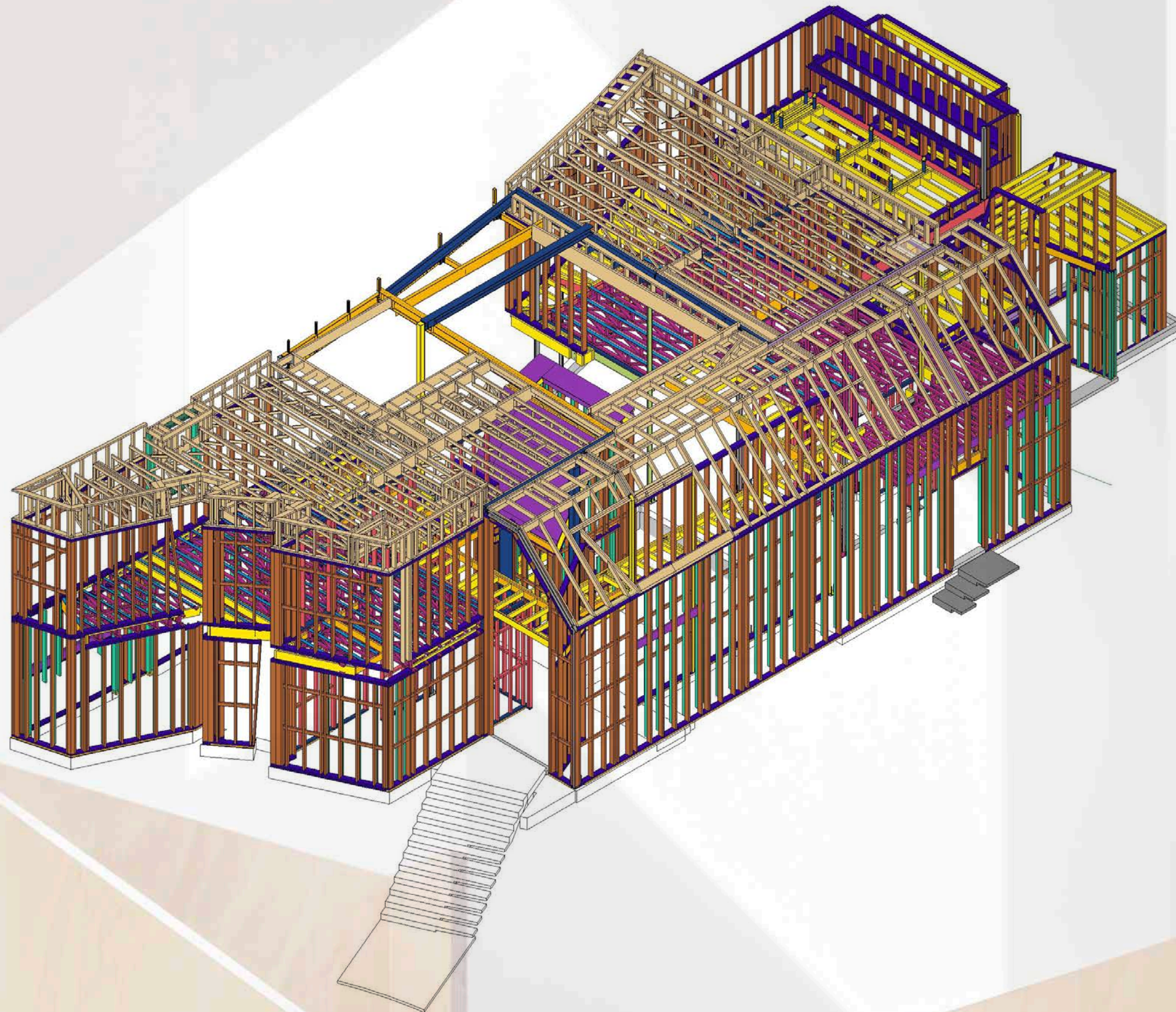


LEARNING FROM LIMESTONE

ARKit
Advanced Prefabricated Architecture



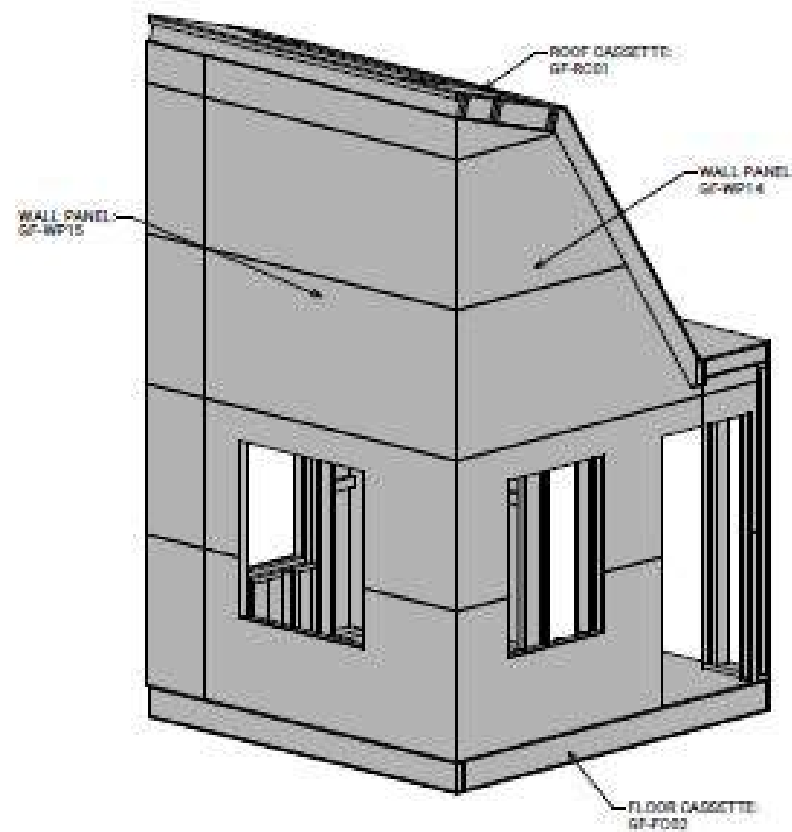
LEARNING FROM LIMESTONE



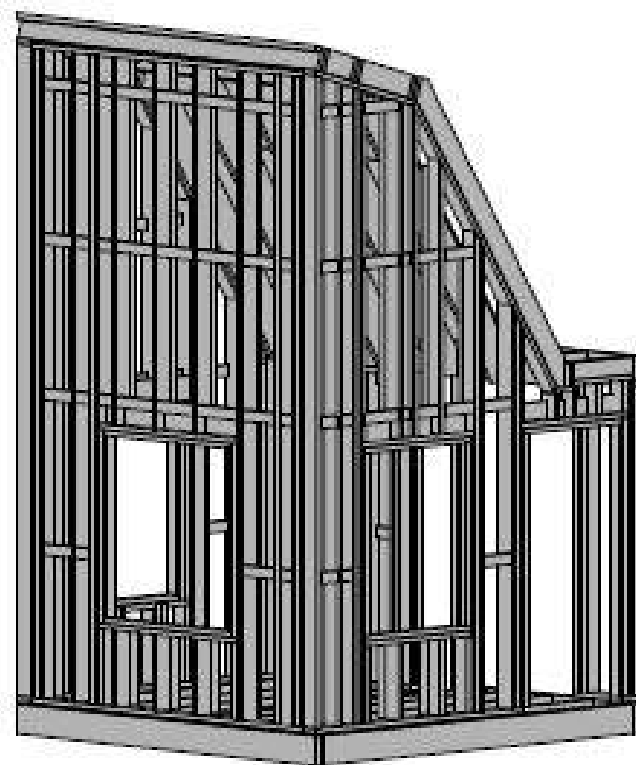
LEARNING FROM LIMESTONE



LEARNING FROM LIMESTONE



GF-MOD02: 3D VIEW



GF-MOD02: FRAMING 3D VIEW

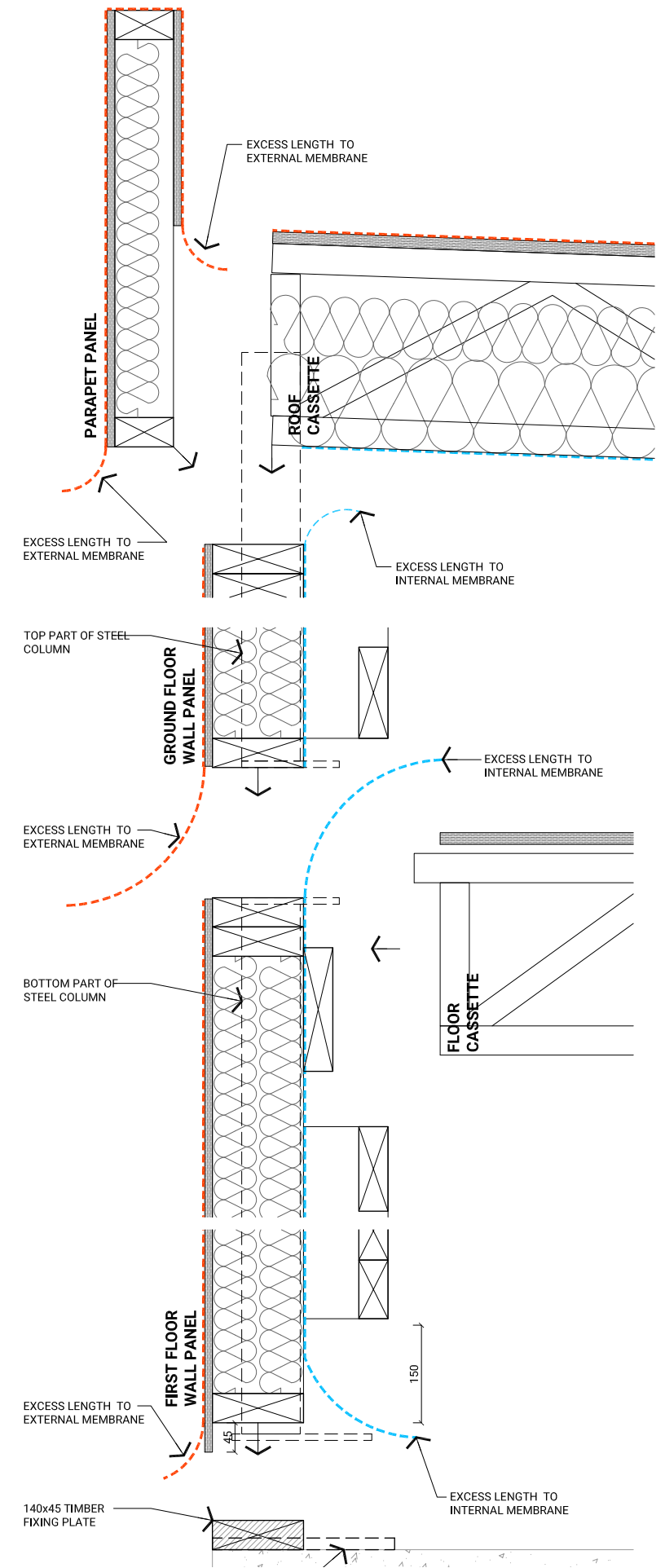
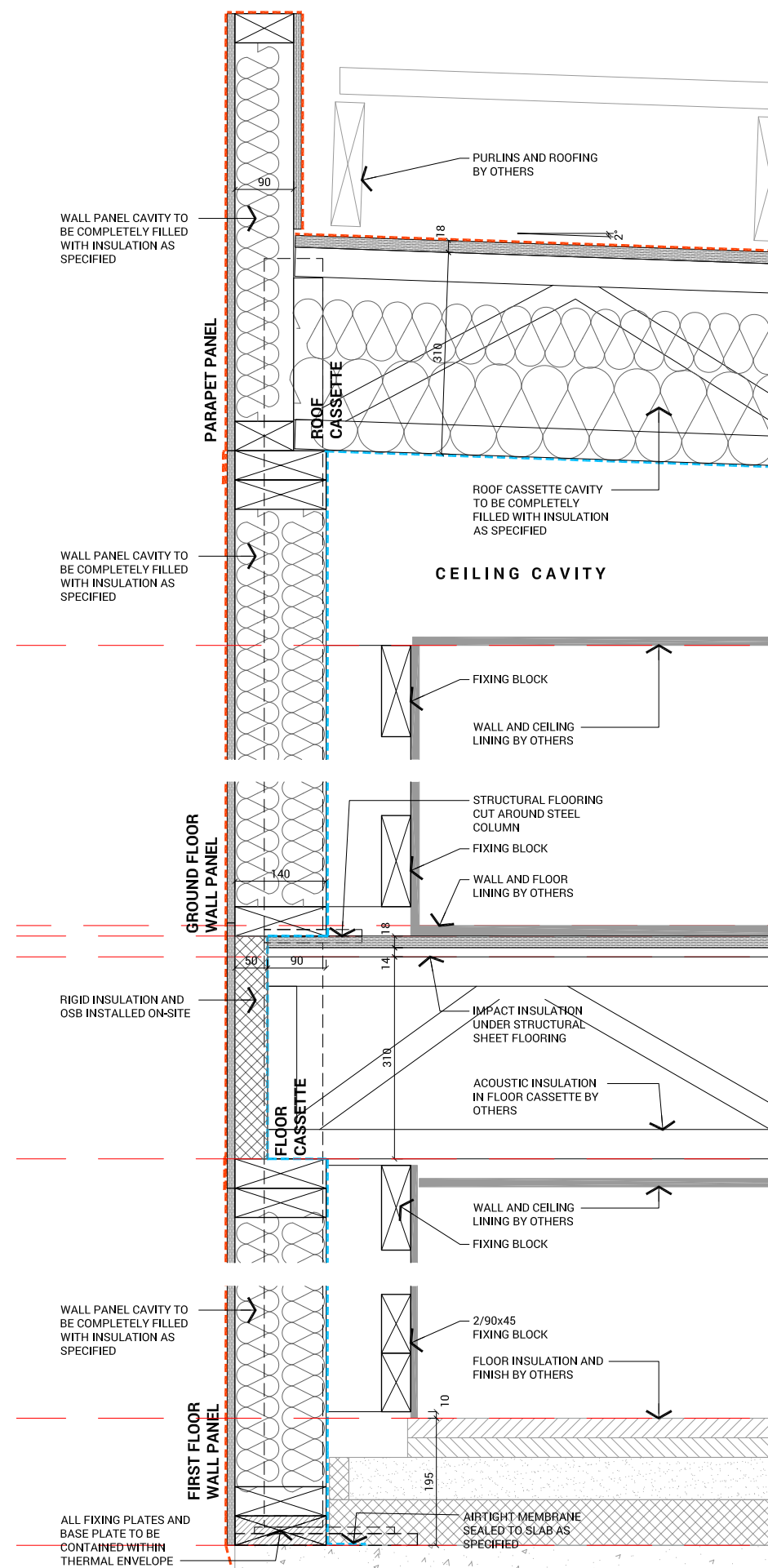
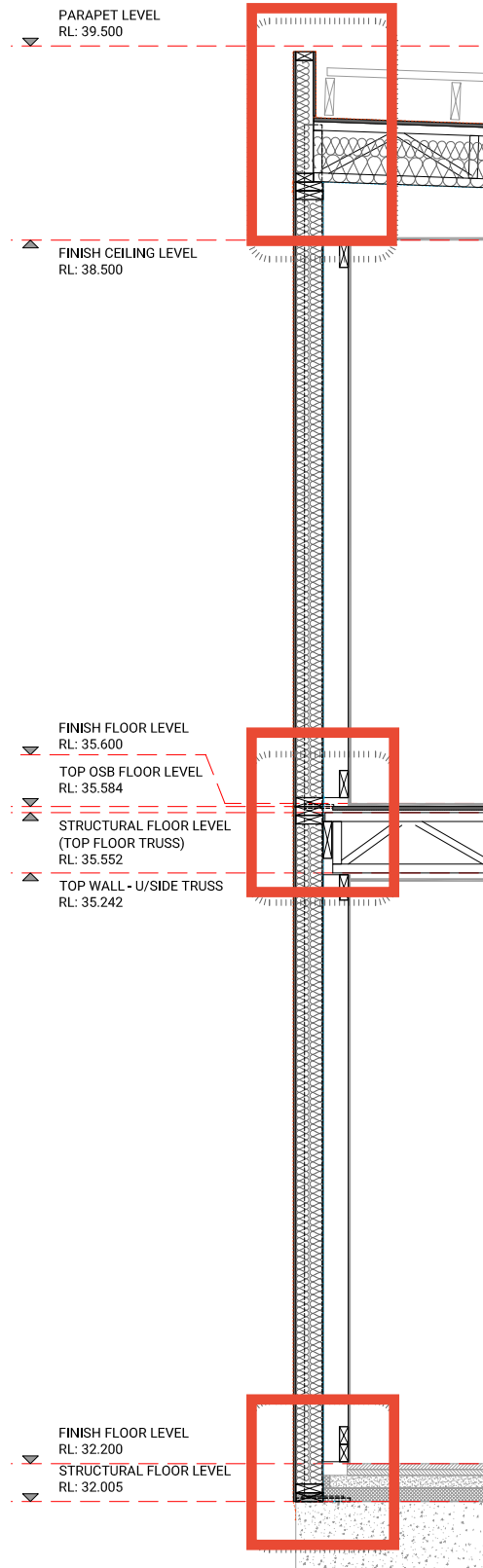


LEARNING FROM LIMESTONE

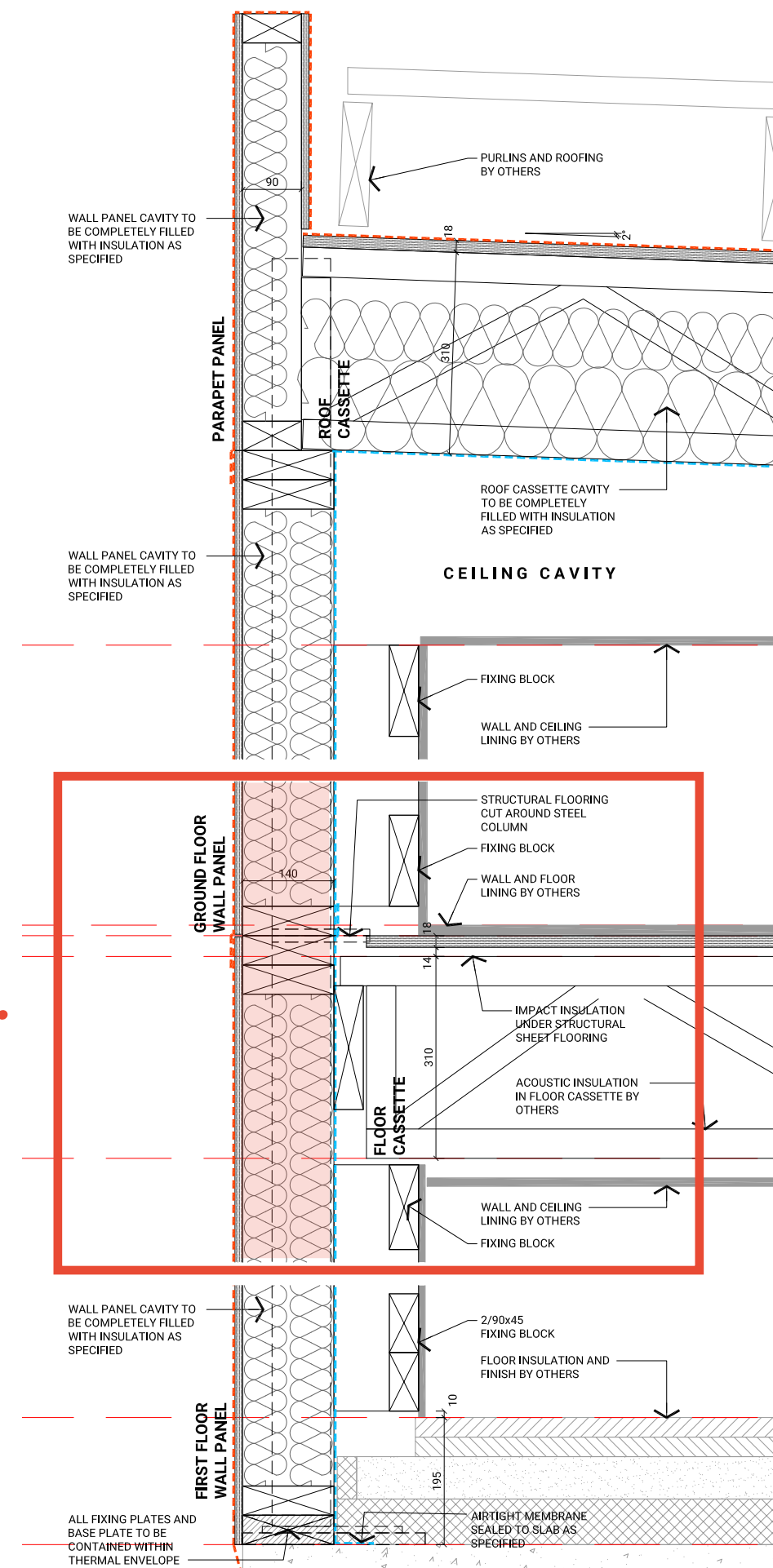
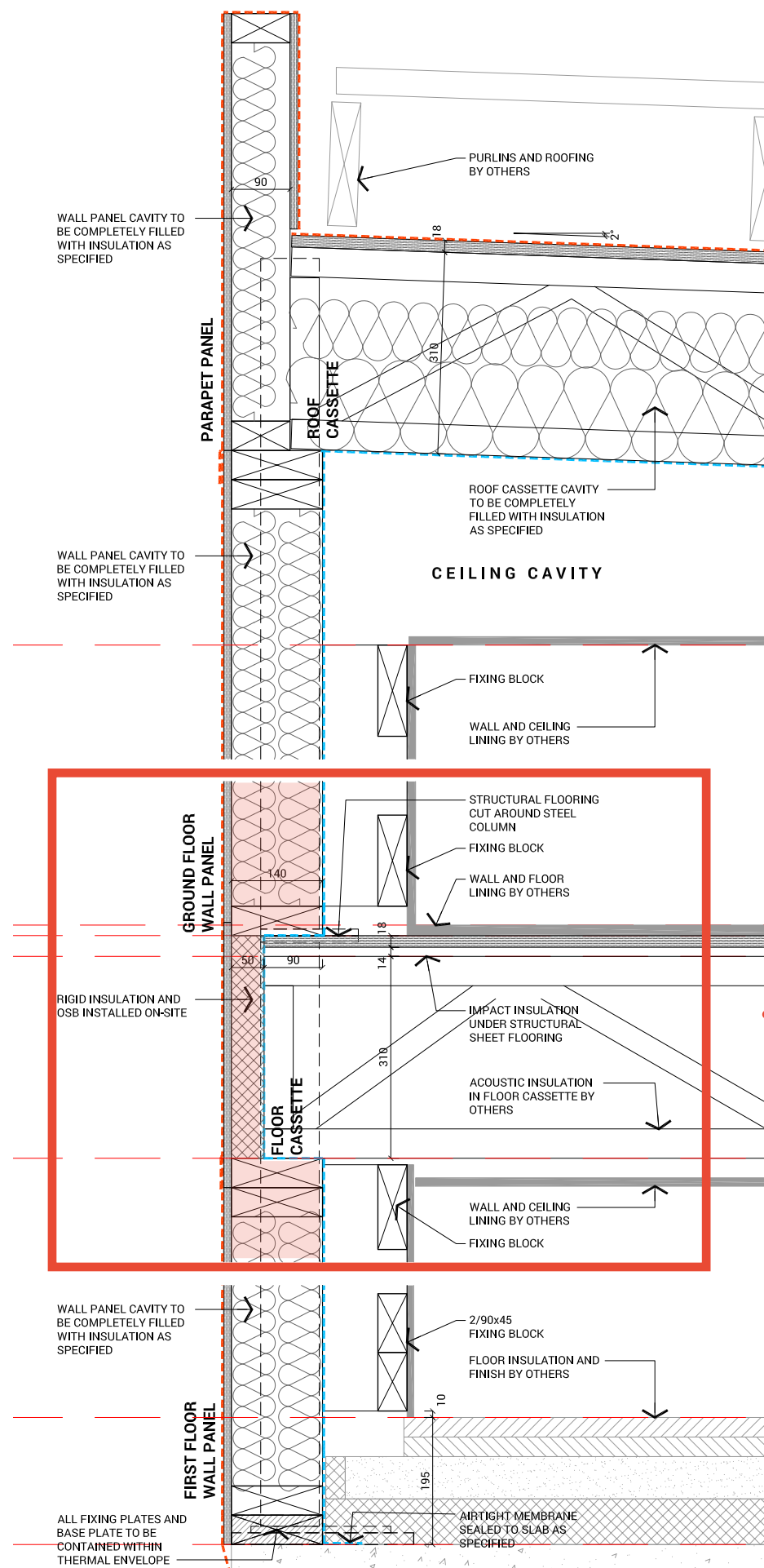


LEARNING FROM LIMESTONE





LEARNING FROM LIMESTONE



LEARNING FROM LIMESTONE



RICHMOND PASSIVE HOUSE



RICHMOND PASSIVE HOUSE



OPPORTUNITIES



OPPORTUNITIES

GRIMSHAW



ARKit

Advanced Prefabricated Architecture

THERMAL BRIDGES



THERMAL BRIDGES EVERYWHERE