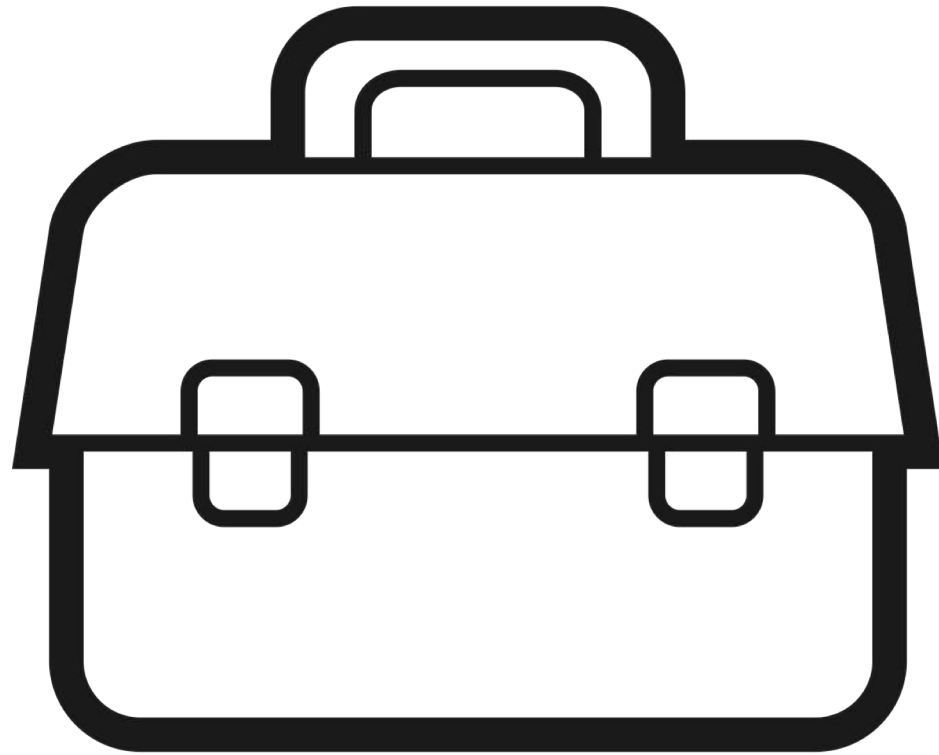


Toolbox Talk



SPPHC 2019

Baden Brown



Painful Lesson/Best Advice

- Verification of performance data from suppliers.
- Tested to which standard?
- ISO 10077-1 or ISO 10077-2
- How many decimal points?
- Could be the difference between meeting PH std or not!

Substitutes

The lure of cheaper options

Not all products are equal





harleybuilders.co.nz

021 2HARLEY

021 2427539

What we do



What we do

Christchurch's first Certified Passive House



What we do...



What we do...



Why we do what we do



Passive House spec- crazy or just nuts?!!



- Architect- ADQ, PHPP- Grant Mitchell,
- Engineer- Viden, Certifier- Jason Quinn

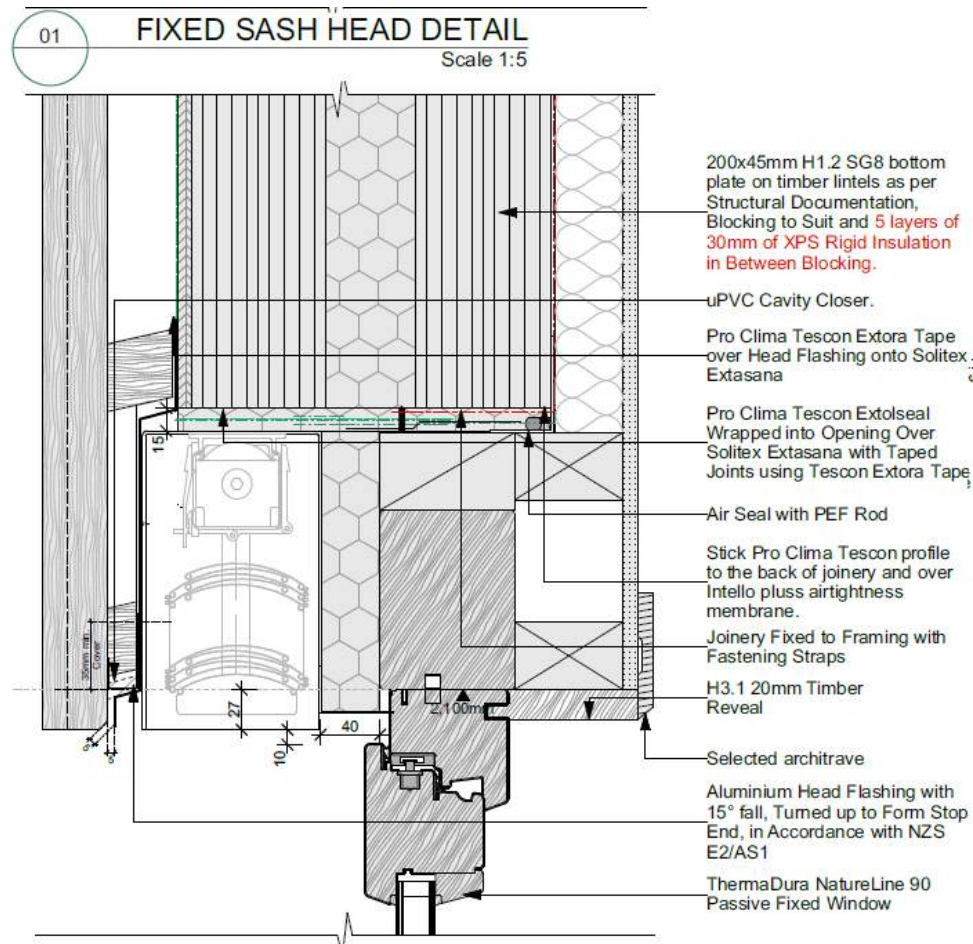
Current project



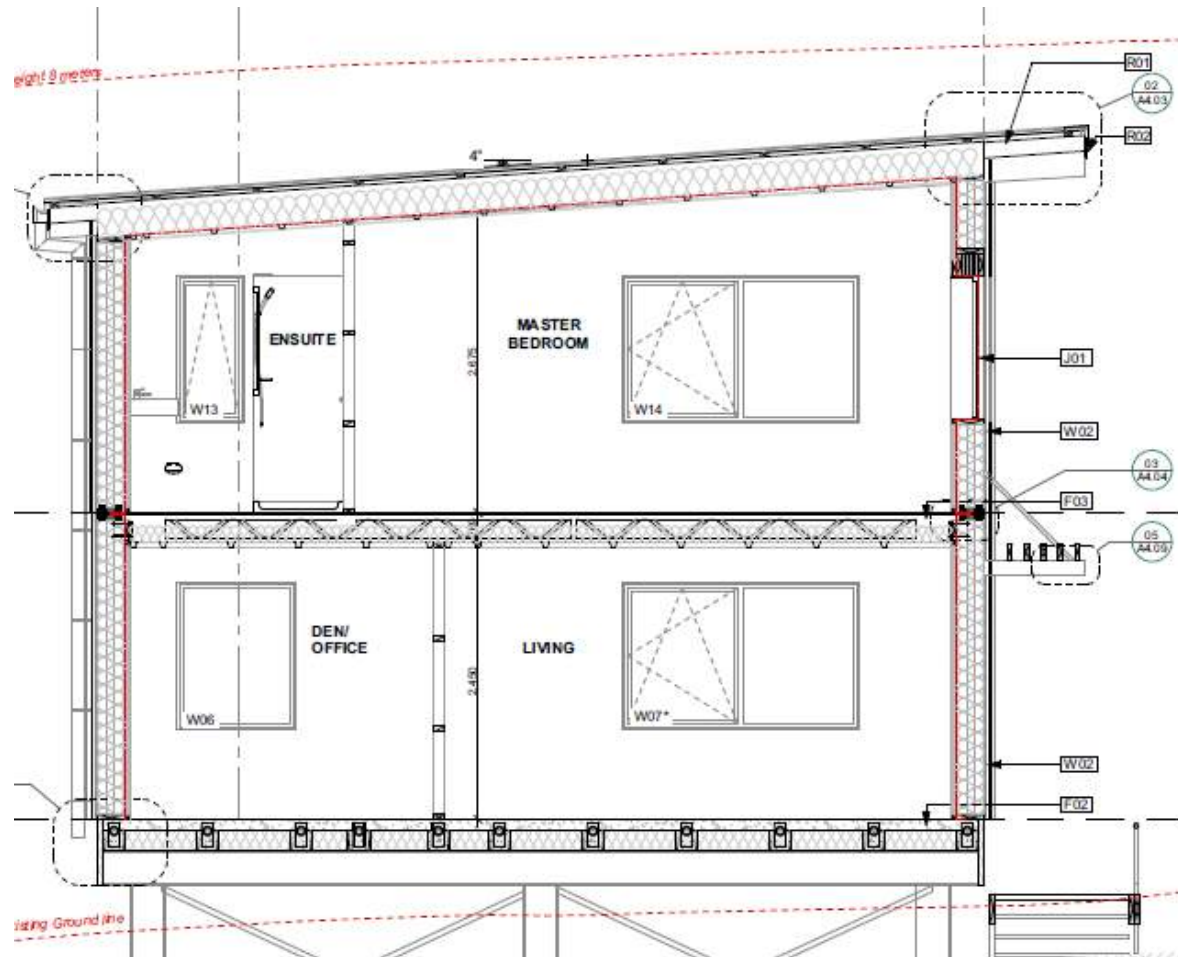
Current project cont'd...



Some details



Some details





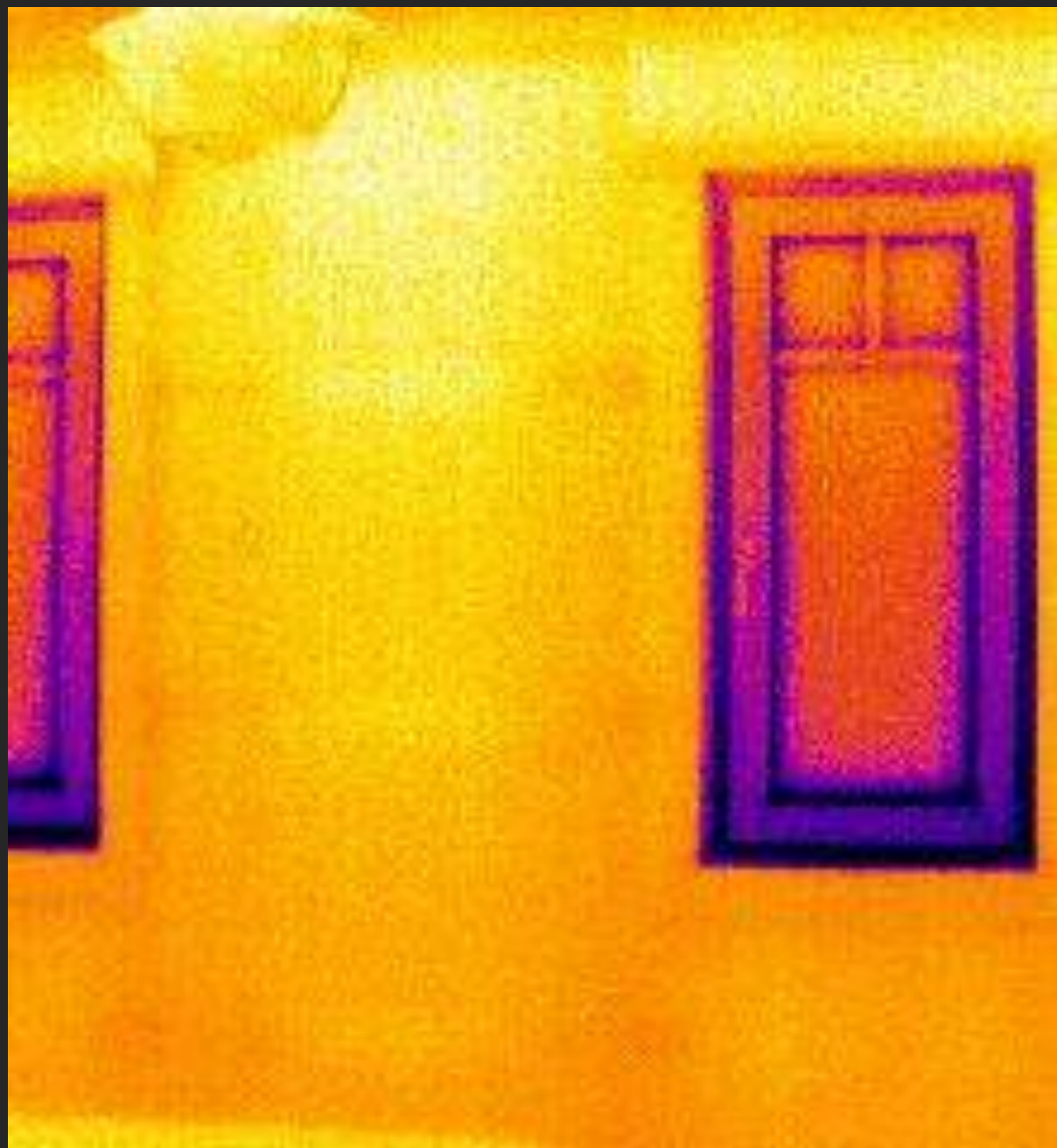
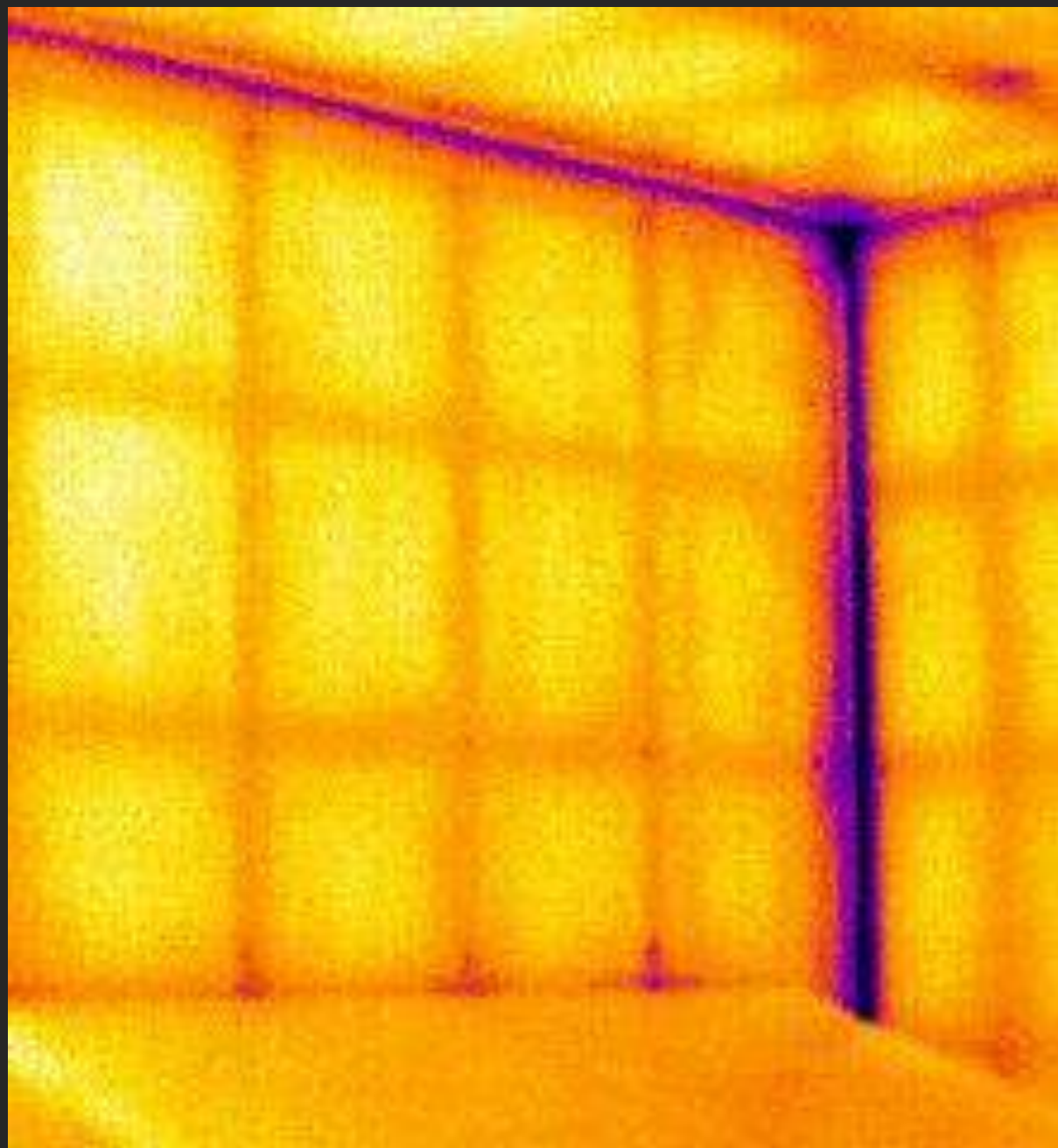
South Pacific Passive House Conference 2019

A detailed architectural line drawing of a modern, single-story house with a gabled roof and large windows. The house is surrounded by various tropical plants and trees, including palm trees and large, spiky-leafed plants. The drawing is in black lines on a white background, with some areas shaded to indicate depth and texture.

Dennis Dowling
Director









**WHAT
HAVE WE
LEARNED?**



**THERE IS
MORE
THAN ONE
WAY!**

ARIDON® Continuous “Warm Frame” Insulation



140mm Framed SIPS with
50mm Insulated Service Cavity



Nudura Insulated Concrete Forms (ICF)



Nudura Insulated Concrete Forms (ICF)



NZ SIPS







**WHAT
WOULD I
BUILD
WITH?**





Team Green Passive House

Completion May 2019





- Christchurch based
- Building from the Ethos standard high performance home through to Certified Passive House Plus



Challenges

- Need to keep your finger on the pulse
- The devil is in the detail
- Educate subcontractors
- Be proactive



Highs and lows of building Passive House

- Love/hate relationship with Passive House
- Building journey can be challenging
- Love the outcomes



www.ethoshomes.co.nz



0800 ethoshomes

peter@ethoshomes.co.nz

Kim Feldborg

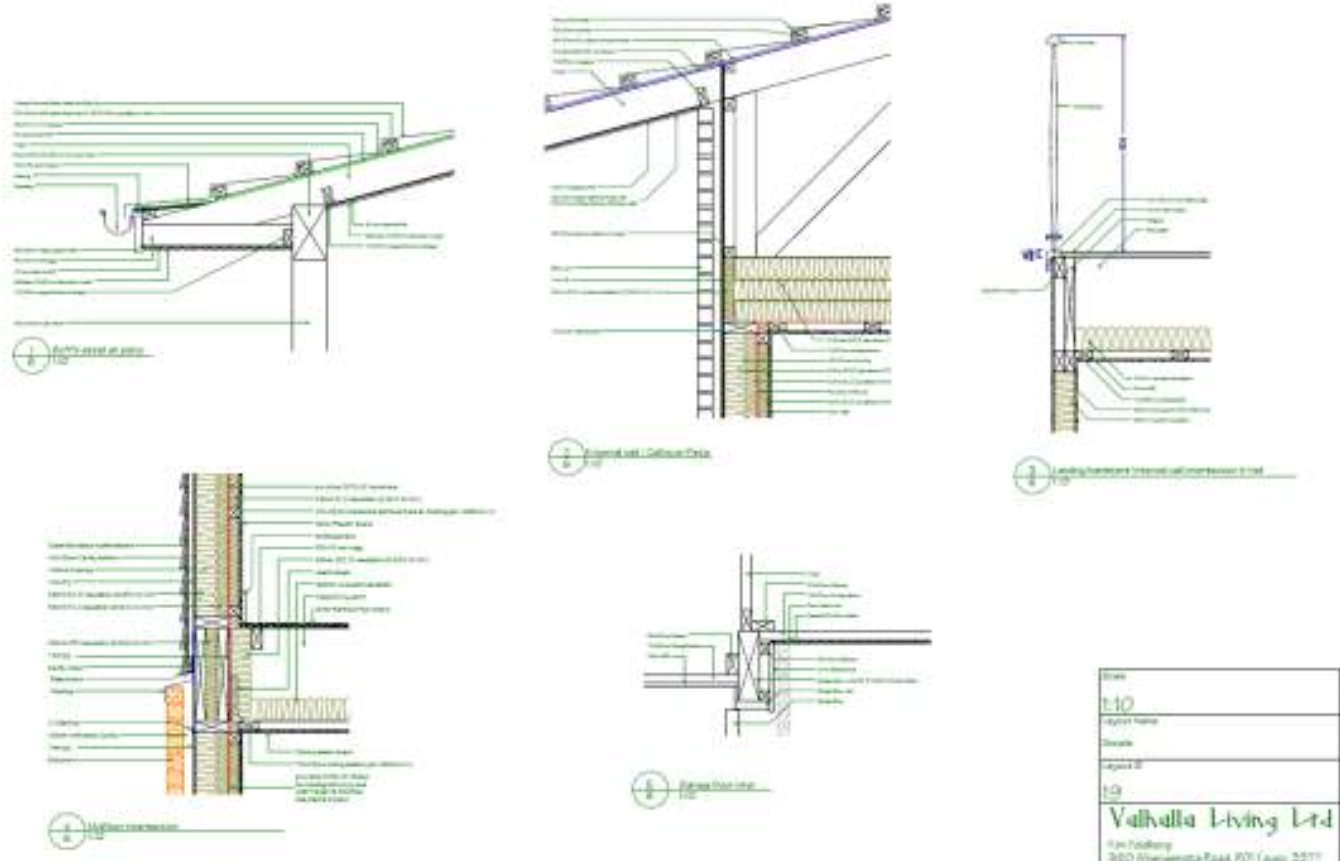





Air tightness

Is the challenge

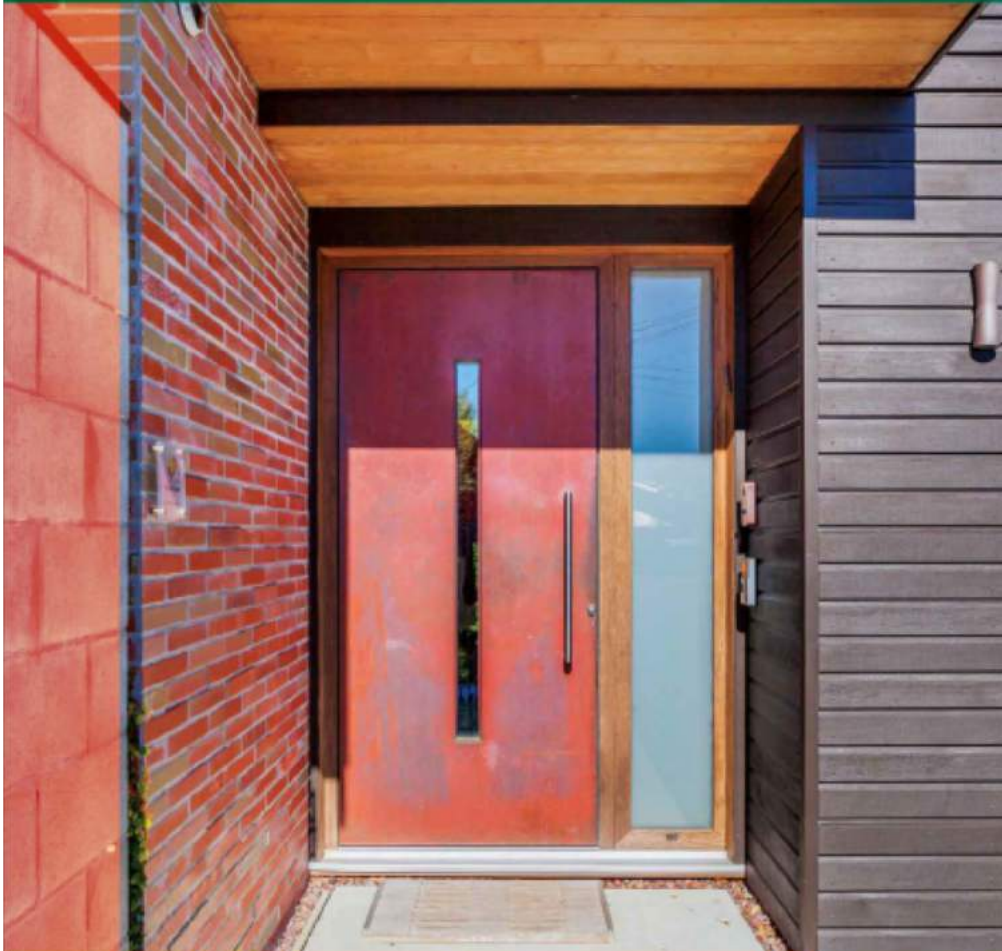
It has to be
worked out at
the design stage



A photograph of a wooden building frame under construction. The image shows a series of horizontal wooden beams supported by vertical posts. The structure is set against a blue sky with light clouds. In the background, there are green hills. A semi-transparent white circle is overlaid on the right side of the image, containing the text "There is a limit to what we can do on site".

There is a limit to what
we can do on site

Passive House for New Zealand



The warm healthy homes we need

Jason Quinn

Our homes should be a safe haven.

In this succinct, fiercely argued book, building scientist and Passive House designer Jason Quinn reminds us of all the ways New Zealand housing fails. He takes aim at the Building Code and the high cost of building average (or worse) homes.

Most of all, this is a book concerned with how to do better. It makes an impassioned argument for much wider use in New Zealand of the Passive House building performance standard. Jason Quinn demolishes myths about Passive House concepts and demonstrates its relevance for New Zealand conditions. The theory is backed up with concrete examples of New Zealand's first 24 Certified Passive Houses and concludes with the more diverse projects—apartment buildings, offices and tourist accommodation—that are being planned.

Of interest to architects and architectural designers—and those among their clients who are interested in how their new home will work and feel, not just how it will look—Passive House for New Zealand is also an important read for anyone involved in the building industry and in making policy on health and housing.

This timely book ... will spark lots of thought, funding and effort into energy-efficient and healthy housing.

—from the foreword by Professor Robyn Phipps, Massey University

ISBN 978-0-473-46903-0



9 780473 469030

www.warmhealthyhomes.co.nz